

مهر دوخت

智能钉扣机

INTELLIGENT BUTTON MACHINE

零件手册

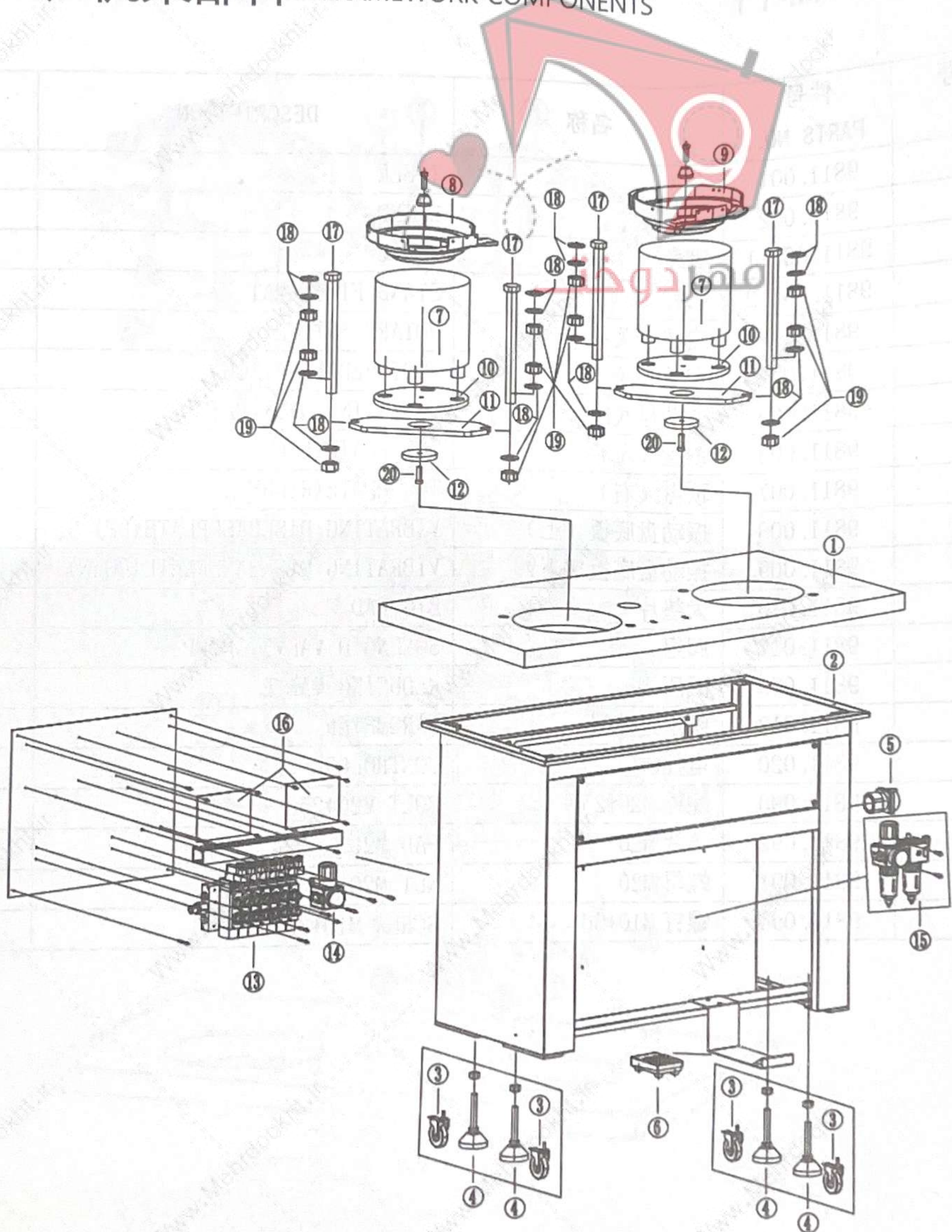
SPARE PARTS BOOK

目 录
CONTENTS



一、机架部件.....	1
FRAMEWORK COMPONENTS	
二、整机部件.....	3
MACHINE COMPONENTS	
三、上扣送料部件.....	5
TOP BUTTON FEEDING COMPONENTS	
四、下扣送料部件.....	7
DOWN BUTTON FEEDING COMPONENTS	
五、振动盘部件.....	9
VIBRATING DISK COMPONENTS	
六、附件部件.....	10
ACCESSORIES COMPONENTS	

一、机架部件 FRAMEWORK COMPONENTS

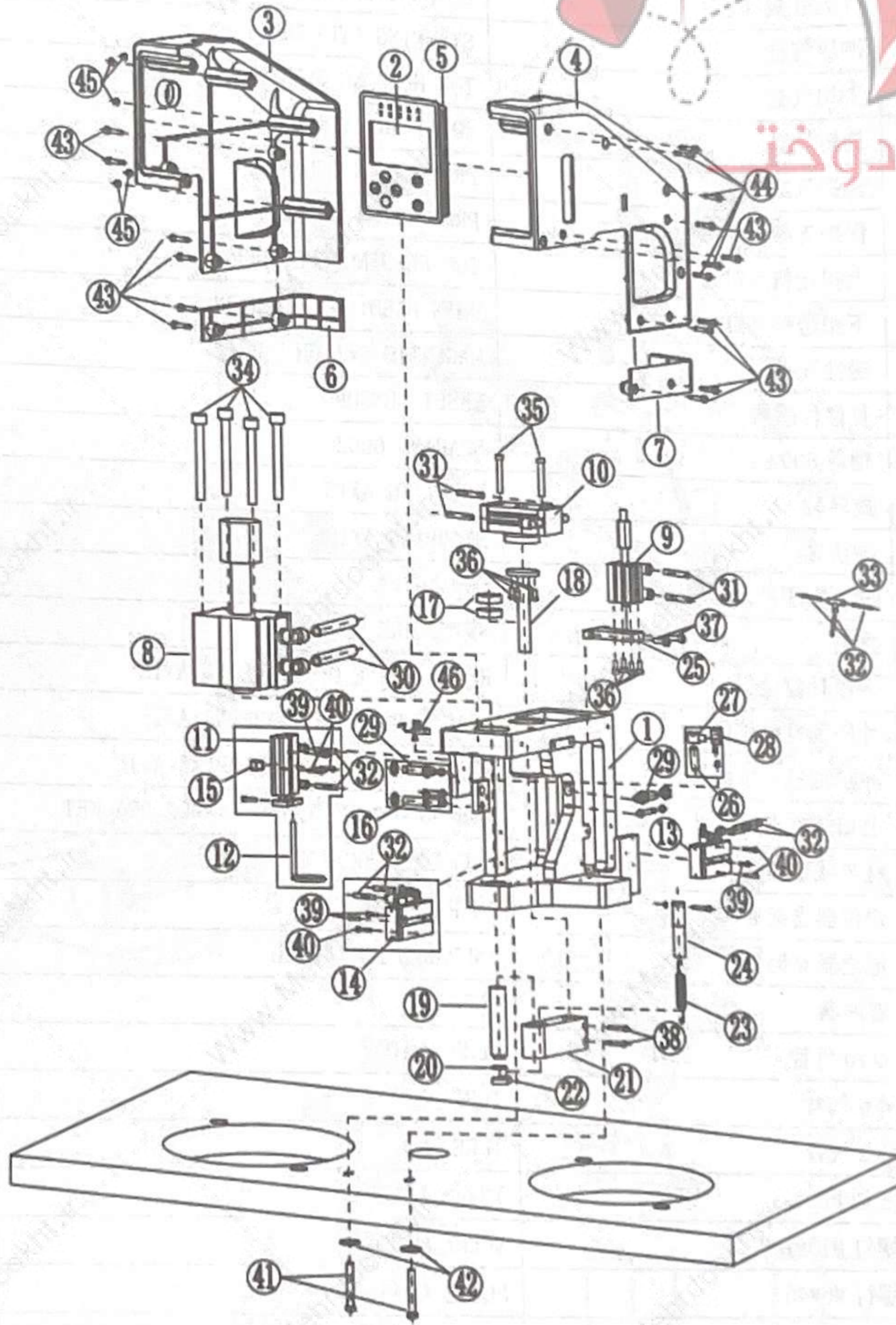


机架部件

FRAMEWORK COMPONENTS LIST

序号 NO.	件号 PARTS NO.	名称	DESCRIPTION	数量 Qty.
1	9811.001	台板	TABLE	1
2	9811.002	机架	STAND	1
3	9811.002-1	脚轮	WHEEL	4
4	9811.002-2	脚杯	STAND FIXED MAT	4
5	9811.003	旋转开关	ROTARY SWITCH	1
6	9811.004	脚踏开关	FOOT PEDAL SWITCH	1
7	9811.005	振动盘底座	VIBRATING DISK BASE	2
8	9811.006	顶盘 (左)	TOP PLATE (LEFT)	1
9	9811.007	顶盘 (右)	TOP PLATE (RIGHT)	1
10	9811.008	振动盘底板 (上)	VIBRATING DISKBASEPLATE (UP)	2
11	9811.009	振动盘底板 (下)	VIBRATING DISKBASEPLATE (DOWN)	2
12	9811.010	大垫片	BIG PAD	2
13	9811.017	阀组	SOLENOID VALVE GROUP	1
14	9811.019	减压阀	REDUCING VALVE	1
15	9811.012	阀组过滤器	BAROMETER	1
16	9811.020	电控	CONTROLLER	1
17	9811.090	螺栓 M20*250	BOLT M20*250	4
18	9811.092	垫片 M20	PAD M20	16
19	9811.091	螺母 M20	NUT M20	12
20	9811.094	螺钉 M10*30	SCREW M10*30	2

二、整机部件 MACHINE COMPONENTS



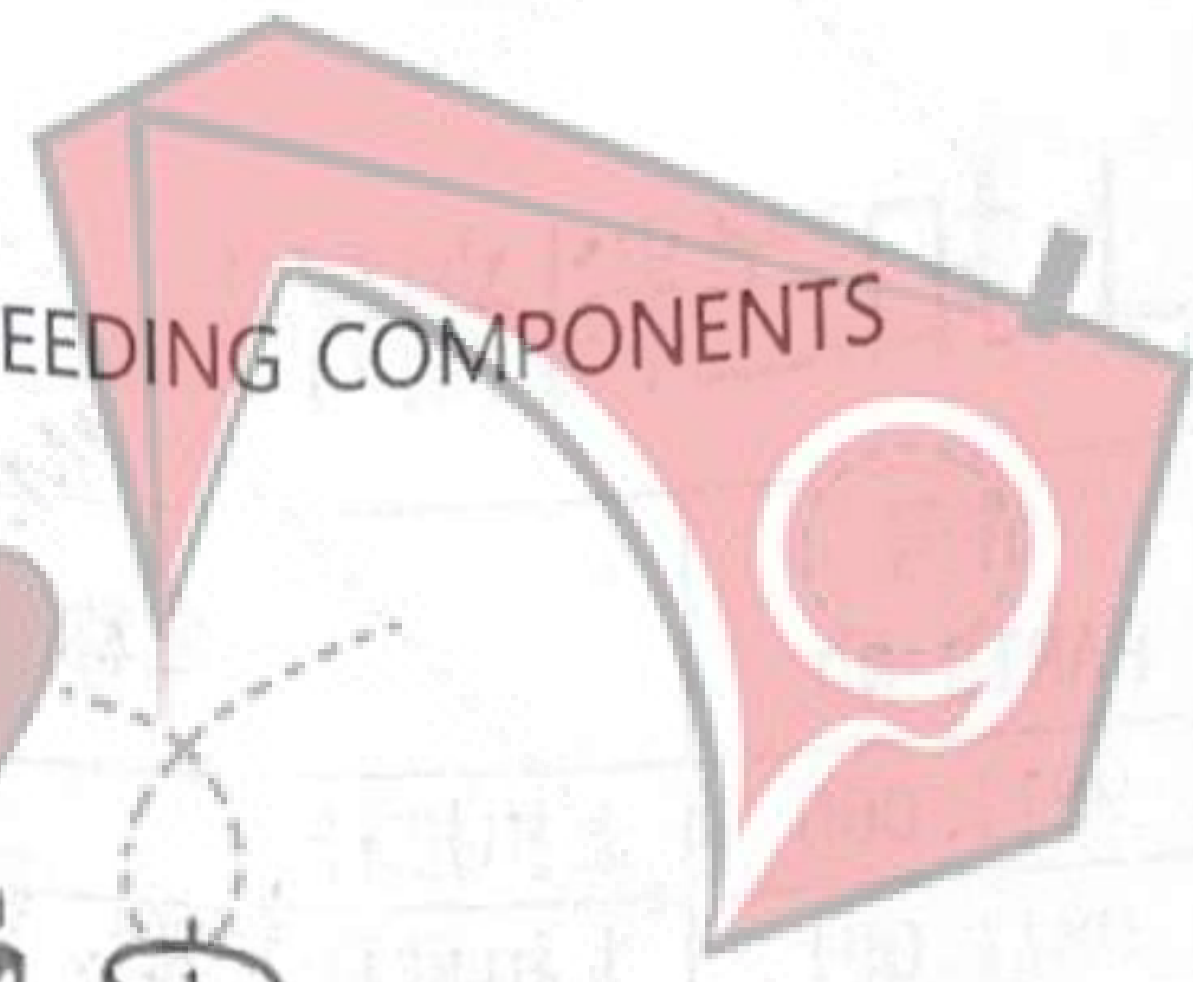
整机部件

MACHINE COMPONENTS LIST

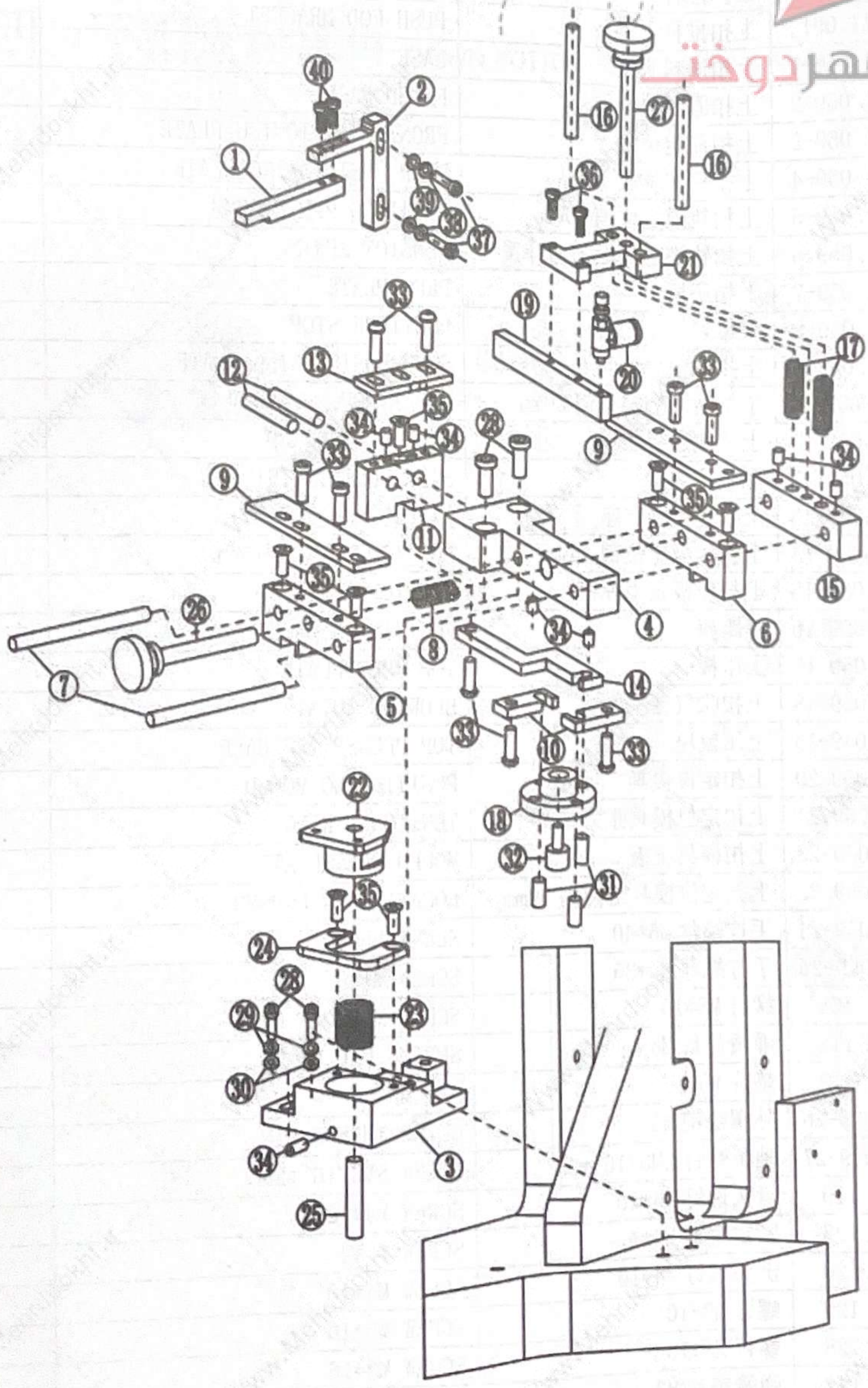
序号 NO.	件号 PARTS NO.	名称	DESCRIPTION	数量 Qty.
1	9811.024	机壳	FRAME	1
2	9811.025	显示屏	DISPLAY SCREEN	1
3	9811.026	塑料外壳 (左)	PLASTIC COVER (LEFT)	1

4	9811.027	塑料外壳 (右)	PLASTIC COVER(RIGHT)	1
5	9811.028	显示屏外壳	DISPLAY COVER	1
6	9811.029	外壳副板 (左)	COVER SUBPLATE(LEFT)	1
7	9811.030	外壳副板 (右)	COVER SUBPLATE(RIGHT)	1
8	9811.031	冲压气缸	STAMPING CYLINDER	1
9	9811.032	上扣气缸	TOP HOLDING BUTTON CYLINDER	1
10	9811.033	旋转气缸	ROTATING CYLINDER	1
11	9811.034	保护气缸	PROTECTION CYLINDER	1
12	9811.035	保护支架	PROTECTION BRACKET	1
13	9811.036	上扣送料气缸	TOP FEEDING CYLINDER	1
14	9811.037	下扣送料气缸	DOWN FEEDING CYLINDER	1
15	9811.048	磁性开关	MAGNETIC SWITCH	1
16	9811.049	复位传感器	RESET SENSOR	1
17	9811.050	轴承 6002	BEARING 6002	2
18	9811.051	旋转轴	ROTATING AXIS	1
19	9811.052-2	冲压轴	STAMPING AXIS	1
20	9811.052-6	冲压轴缓冲 O 型圈	O-RING PAD	1
21	9811.052-1	摆臂	SWING ARM	1
22	9811.052-3	冲压轴复位板	RESET PLATE OF STAMPING AXIS	1
23	9811.052-4	冲压轴复位拉簧	DRAG SPRING OF STAMPING AXIS	1
24	9811-052-5	冲压轴复位拉簧套	DRAG SPRING COVERSTAMPING AXIS	1
25	9811.053	上扣气缸支架	TOP HOLDINGBUTTON CYLINDER BRACKET	1
26	9811.055	红外线定位器	INFRARED LOCATOR	1
27	9811.056	定位器支架 a	INFRARED BRACKET a	1
28	9811.057	定位器支架 b	INFRARED BRACKET b	2
29	9811.058	缓冲器	BUFFER	2
30	9811.134	φ 10 气管	TUBE φ 10	4
31	9811.135	φ 6 气管	TUBE φ 6	9
32	9811.136	φ 4 气管	TUBE φ 4	1
33	9811.146	三通 PE-4	THREE LINKS	4
34	9811.093	螺钉 M10*100	SCREW M10*100	2
35	9811.100	螺钉 M6*45	SCREW M6*45	8
36	9811.110	螺钉 M5*12	SCREW M5*12	2
37	9811.103	螺钉 M6*16	SCREW M6*16	2
38	9811.107	螺钉 M5*25	SCREW M5*25	4
39	9811.128	螺钉 M3*16	SCREW M3*16	5
40	9811.127	螺钉 M3*20	SCREW M3*20	2
41	9811.095	螺钉 M8*55	SCREW M8*55	2
42	9811.098	垫片 M8	WASHER M8	12
43	9811.109	螺钉 M5*16	SCREW M5*16	5
44	9811.106	螺钉 M5*30	SCREW M5*30	5
45	9811.114	螺母 M5	NUT M5	1
46	9811.022	LED 灯	LED	

三、上扣送料部件 TOP BUTTON FEEDING COMPONENTS



مهردوخت

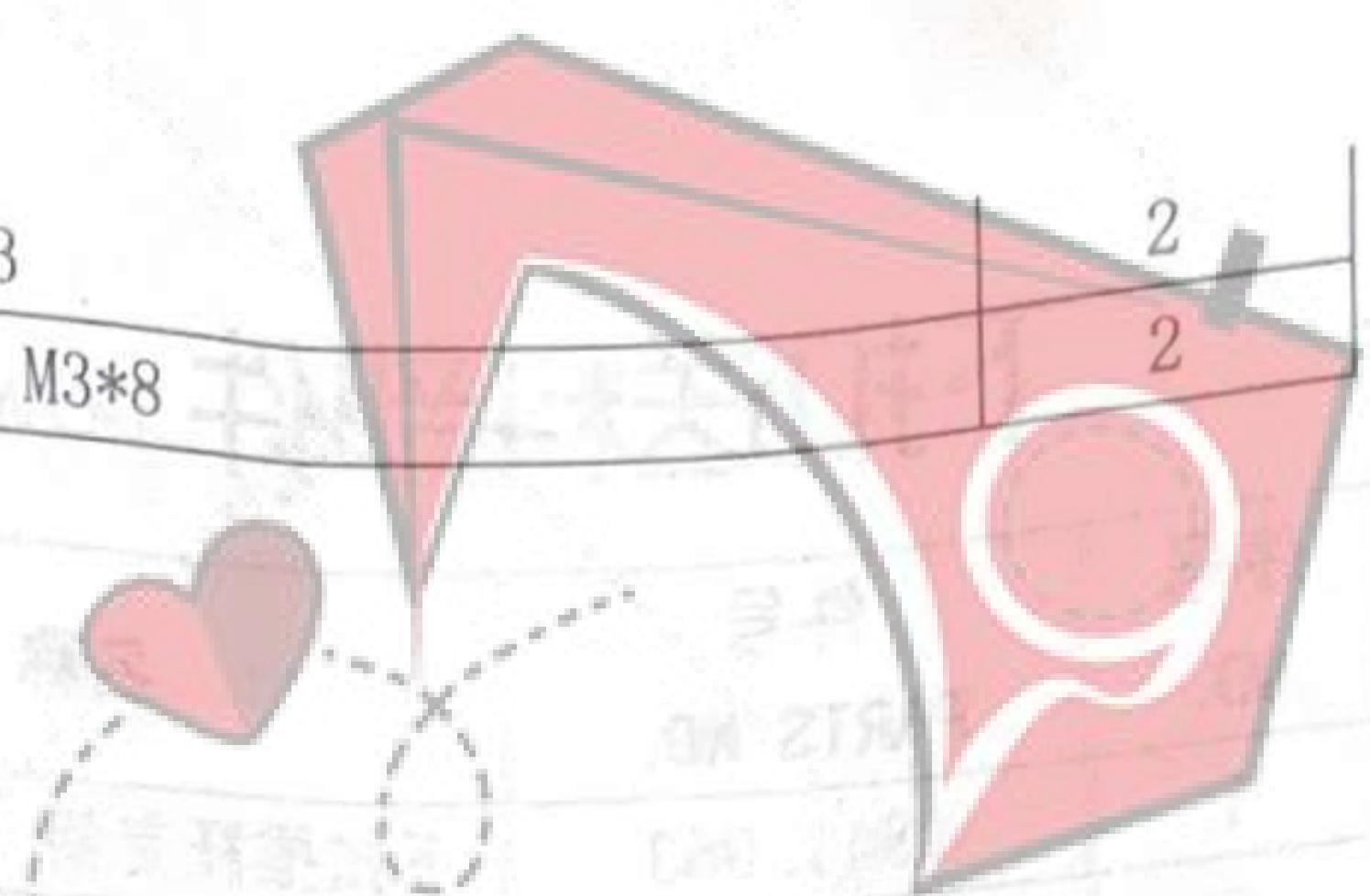


上扣送料部件

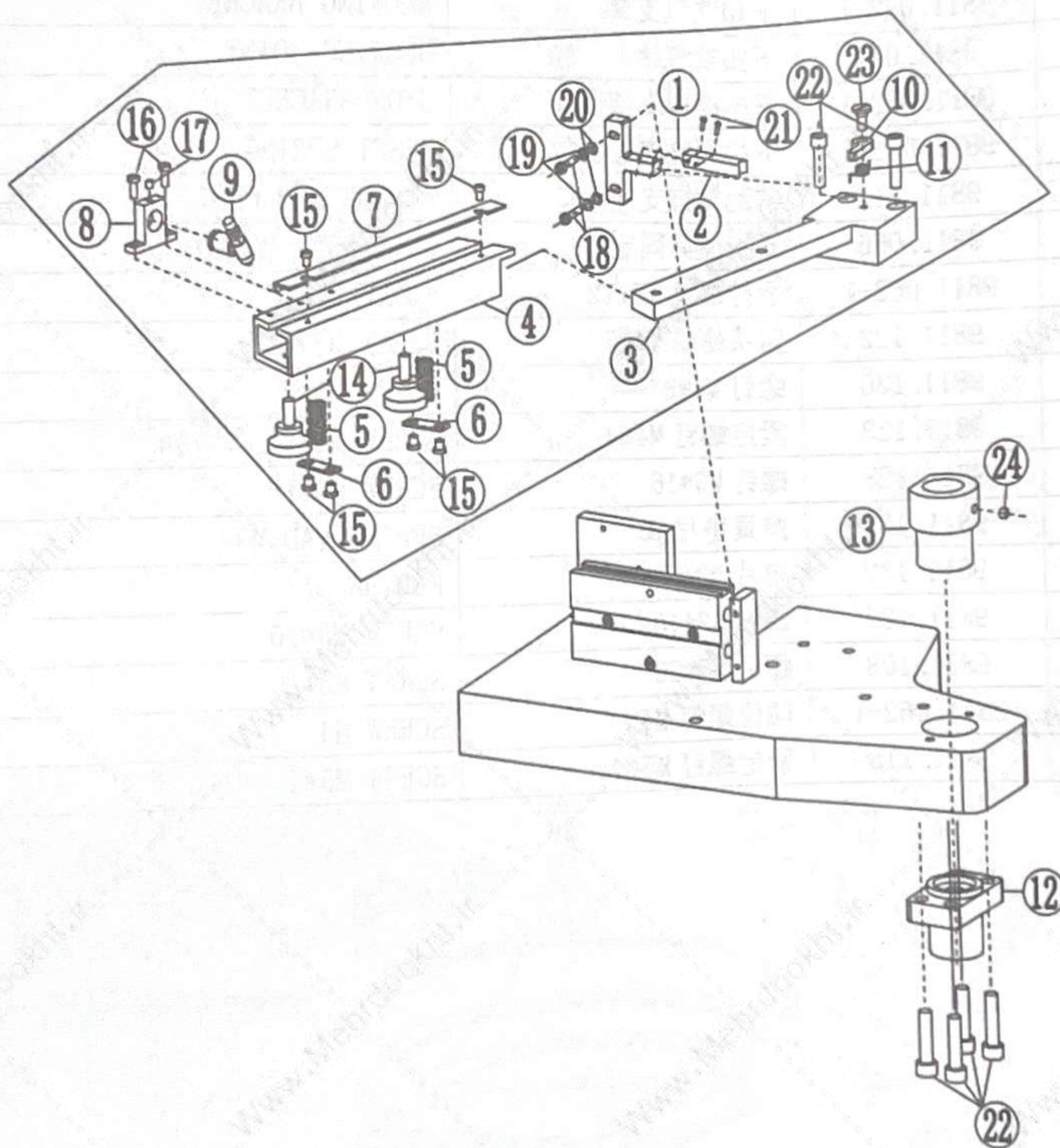
TOP BUTTON FEEDING COMPONENTS LIST

序号 NO.	件号 PARTS NO.	名称	DESCRIPTION	数量 Qty.
1	9811.060	上扣推杆	PUSH ROD	1
2	9811.061	上扣推杆支架	PUSH ROD-BRACKET	1
3	9811.059-1	上扣送料底座	BASE	1
4	9811.059-2	上扣固定轨道	FIXED RAIL	1
5	9811.059-3	上扣前定位板	FRONT POSITIONING PLATE	1
6	9811.059-4	上扣后定位板	REAR POSITIONING PLATE	1
7	9811.059-5	上扣轨道定位销 60mm	LOCATING PIN L=60MM	2
8	9811.059-6	上扣轨道定位板张力弹簧	TENSION SPRING	2
9	9811.059-7	上扣压板	PRESSPLATE	2
10	9811.059-8	限位勾	POSITIVE STOP	2
11	9811.059-9	上扣侧定位板	SIDE POSITIONING PLATE	1
12	9811.059-10	上扣轨道侧定位销 20mm	LOCATINGPIN L=20MM	2
13	9811.059-11	上扣侧压板	SIDE PRESSBOARD	1
14	9811.059-12	侧限位勾	SIDE POSITIVE STOP	1
15	9811.059-13	上扣压板固定座	FIXED SEAT	1
16	9811.059-14	上扣压板定位销 40mm	LOCATING PIN L=40MM	2
17	9811.059-15	上扣压板张力弹簧	TENSION SPRING	2
18	9811.059-16	等距座	EQUIDISTANTBASE	1
19	9811.059-17	上压板	TOP PRESSPLATE	1
20	9811.059-18	上扣吹气接头	BLOWING JOINT	1
21	9811.059-19	上压板座	TOP PRESSPLATE BASE	1
22	9811.059-20	上扣定位模具	POSITIONING MOULD	1
23	9811.059-21	上扣定位模具张力弹簧	TENSION SPRING	1
24	9811.059-22	上扣模具压板	MOULD PRESSPLATE	1
25	9811.059-23	上扣定位模具定位销 29mm	LOCATINGPIN L=29MM	1
26	9811.059-24	手拧螺丝 M5*40	SCREW M5*40	1
27	9811.059-25	手拧螺丝 M5*35	SCREW M5*35	4
28	9811.108	螺钉 M5*20	SCREW M5*20	2
29	9811.112	弹簧垫片 M5	SPRING PAD M5	2
30	9811.113	垫片 M5	PAD M5	3
31	9811.059-26	外螺纹销 M5	OUTER THREAD PIN	1
32	9811.059-27	轴位螺钉 SM3/16"*28	SCREW SM3/16"*28	9
33	9811.119	盘头螺钉 M4*10	SCREW M4*10	7
34	9811.123	紧定螺钉 M4*4	SCREW M4*4	7
35	9811.120	沉头螺钉 M4*10	SCREW M4*10	2
36	9811.129	螺钉 M3*10	SCREW M3*10	2
37	9811.128	螺钉 M3*16	SCREW M3*16	2
38	9811.131	弹簧垫片 M3	SPRING PAD M3	2

39	9811.132	垫片 M3	PAD M3	2
40	9811.130	螺钉 M3*8	SCREW M3*8	2



四、下扣送料部件 DOWN BUTTON FEEDING COMPONENTS

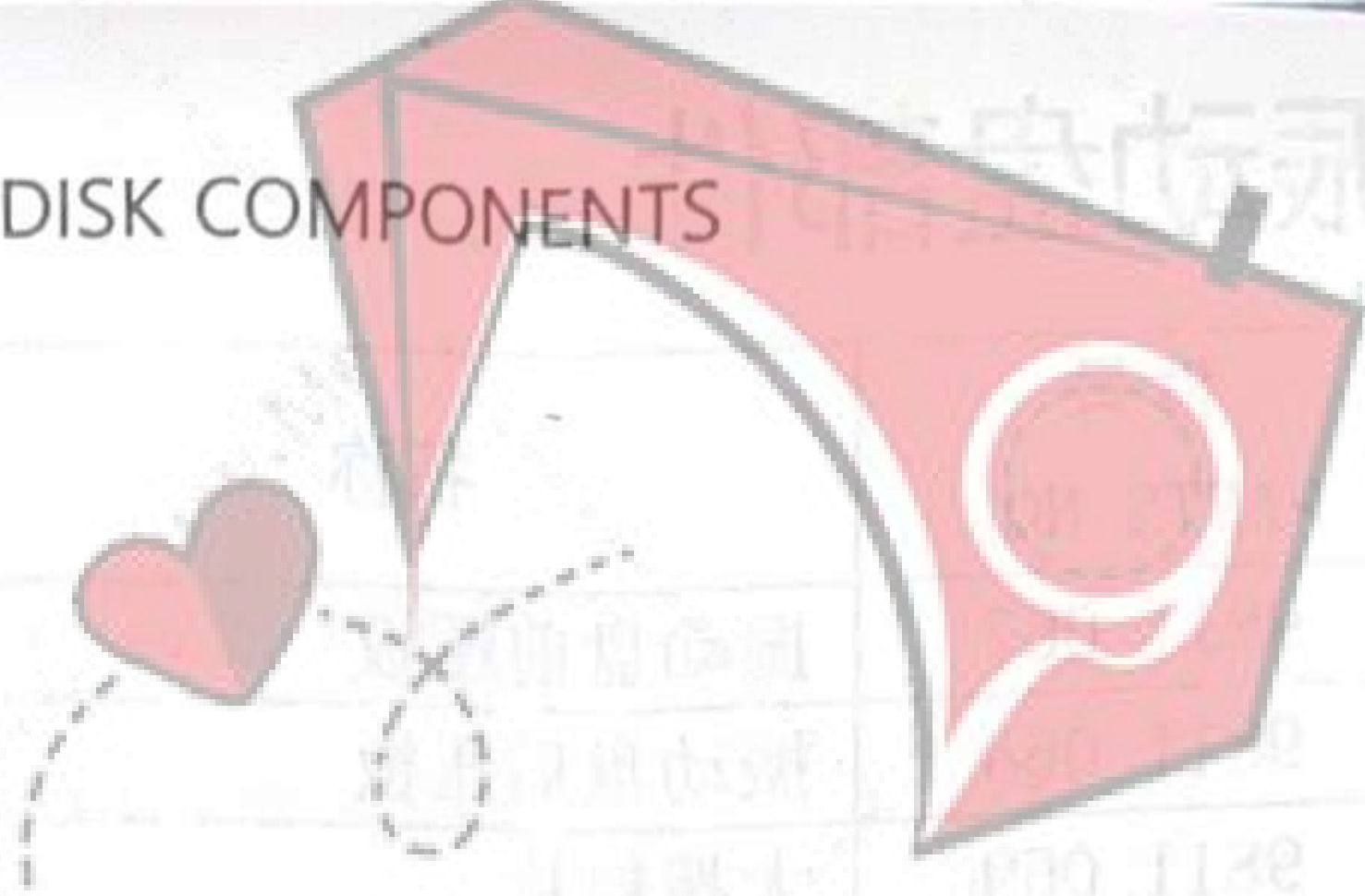


下扣送料部件 DOWN BUTTON FEEDING COMPONENTS LIST

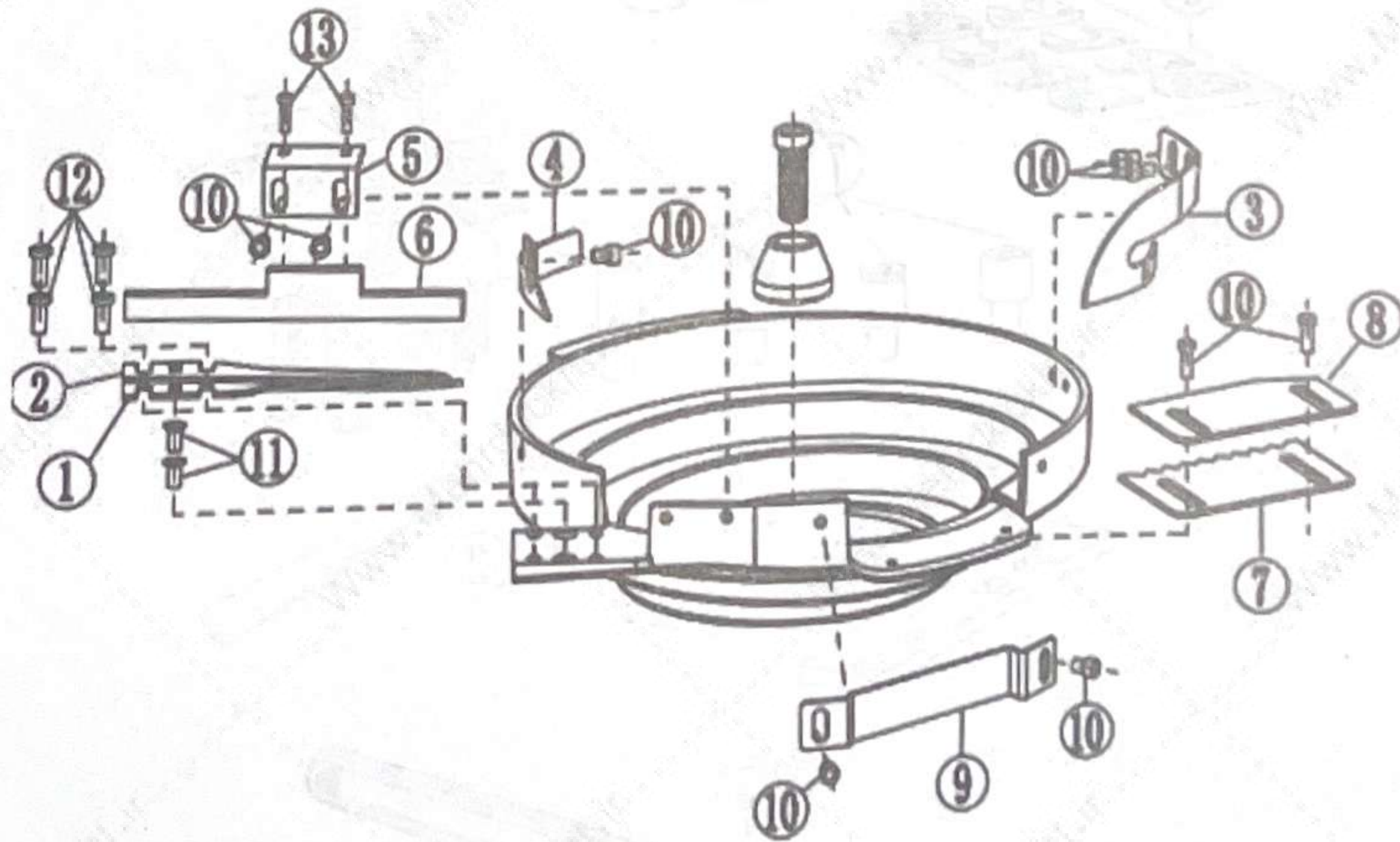
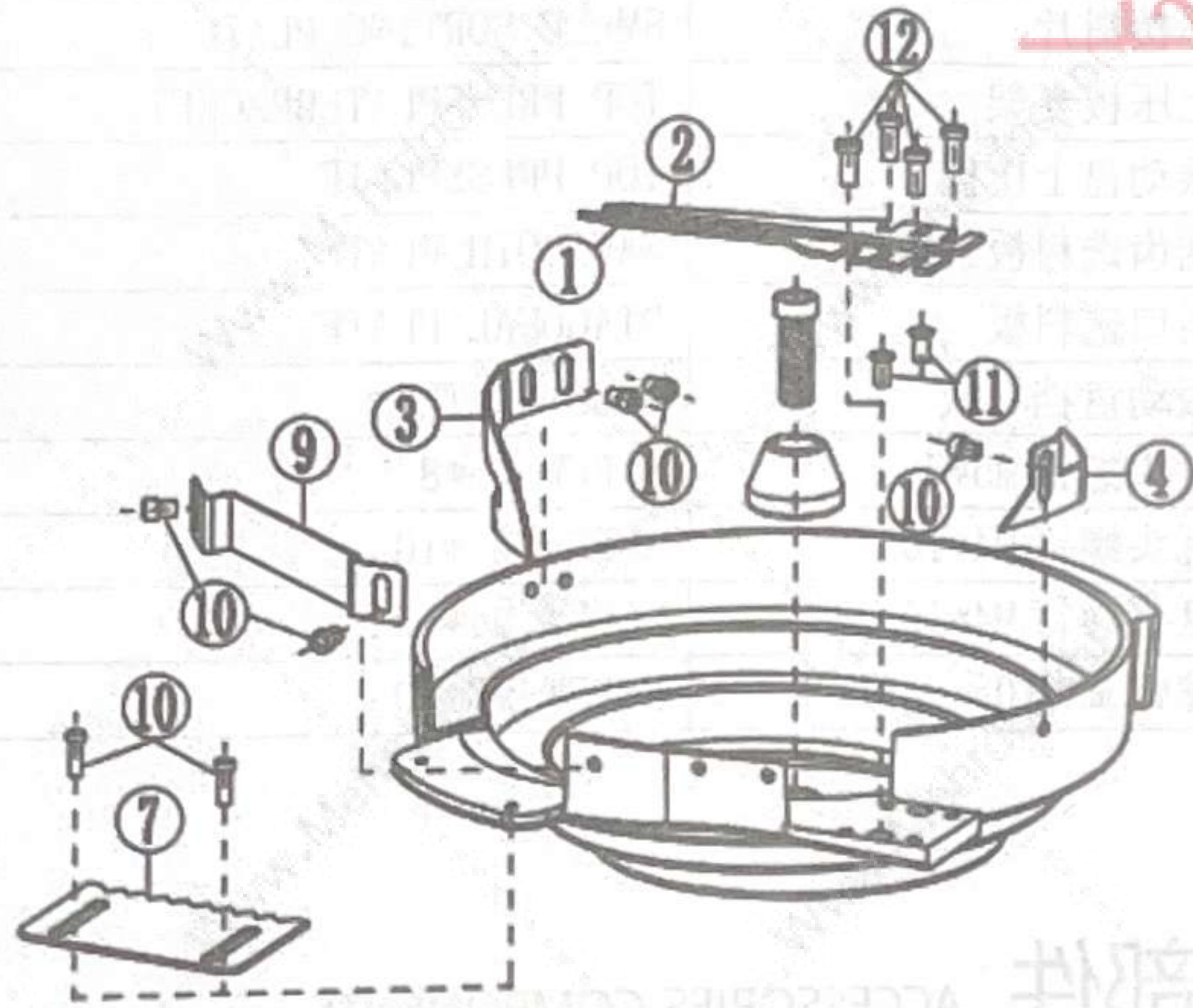
序号 NO.	件号 PARTS NO.	名称	DESCRIPTION	数量 Qty.
1	9811.063	下扣推杆支架	PUSH ROD BRACKET	1
2	9811.064	下扣推杆	PUSH ROD	1
3	9811.062-1	下扣固定轨道	FIXED RAIL	1
4	9811.062-1	下扣调节轨道	ADJUST RAIL	1
5	9811.062-1	下扣轨道张力弹簧	TENSION SPRING	2
6	9811.062-1	下扣轨道弹簧压板	PRESSPLATE	2
7	9811.062-1	下扣轨道调节压板	ADJUST PRESSPLATE	1
8	9811.062-1	下扣吹气支架	BLOWING BRACKET	1
9	9811.047	下扣吹气接头	BLOWING JOINT	1
10	9811.062-1	下扣挡料支架	STOP BRACKET	1
11	9811.062-1	下扣挡料支架复位弹簧	RESET SPRING	1
12	9811.212	辅助气缸支座	SUPPORT BRACKET	1
13	9811.066	下扣模具固定座	UNIVERSAL MOULD	1
14	9811.062-1	手拧螺丝 M5*12	SCREW M5*12	2
15	9811.122	盘头螺钉 M4*5	SCREW M3*5	6
16	9811.130	螺钉 M3*8	SCREW M3*8	2
17	9811.123	紧定螺钉 M4*4	SCREW M4*4	1
18	9811.128	螺钉 M3*16	SCREW M3*16	2
19	9811.131	弹簧垫片 M3	SPRING PAD M3	2
20	9811.132	垫片 M3	PAD M3	2
21	9811.129	螺钉 M3*10	SCREW M3*10	1
22	9811.108	螺钉 M5*20	SCREW M5*20	6
23	9811.062-1	轴位螺钉 M4	SCREW M4	1
24	9811.115	紧定螺钉 M5*4	SCREW M5*4	1

五、振动盘部件

VIBRATING DISK COMPONENTS



مهر وخت

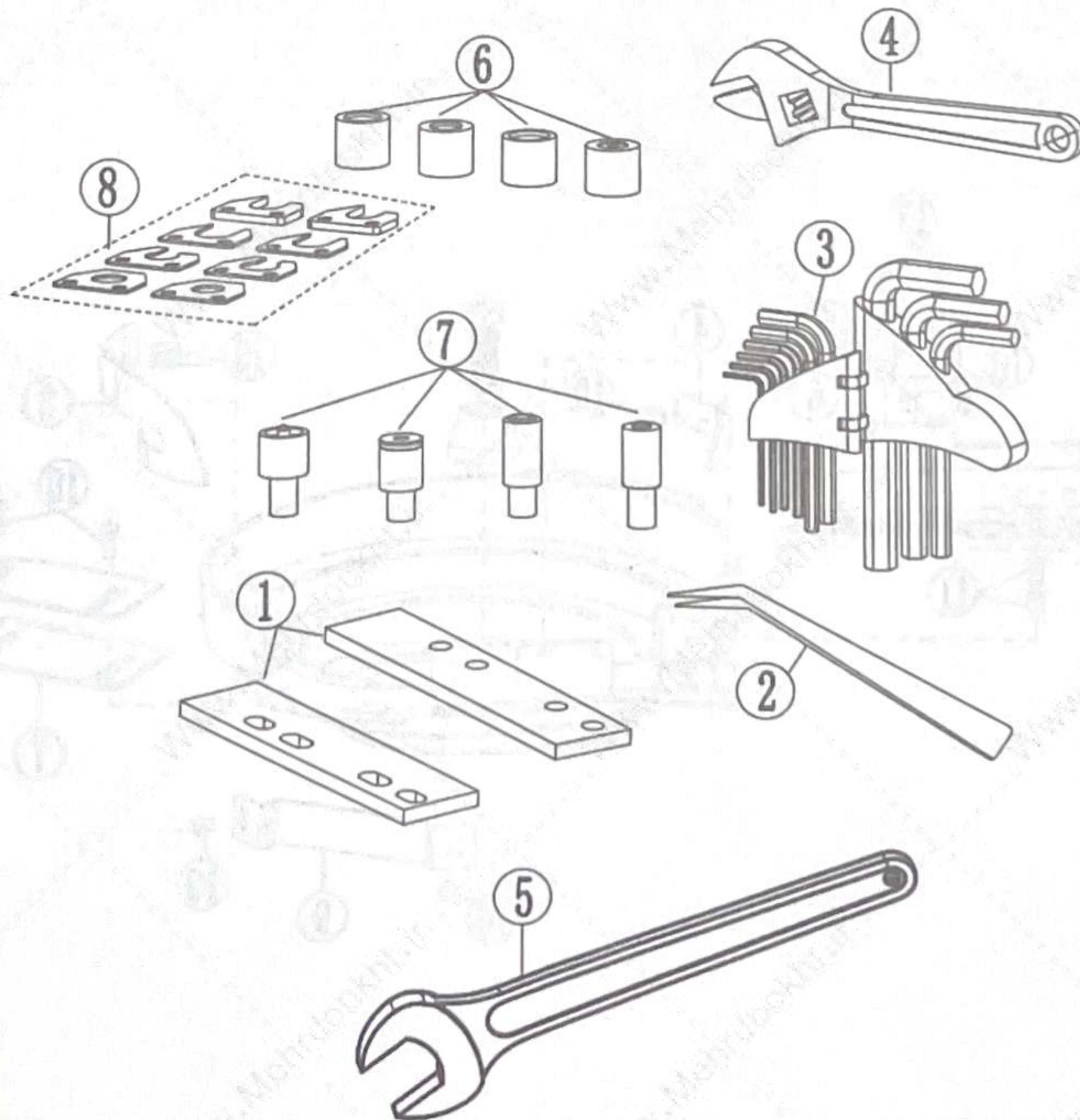


振动盘部件

VIBRATING DISK COMPONENTS LIST

序号 NO.	件号 PARTS NO.	名称	DESCRIPTION	数量 Qty.
1	9811.067	振动盘前压板	FRONT PRESSPLATE	2
2	9811.068	振动盘后压板	REAR PRESSPLATE	2
3	9811.069	大拨料片	BIG SORTING PLATE	2
4	9811.070	小拨料片	SMALL SORTING PLATE	2
5	9811.071	上压板支架	TOP PRESSPLATEBRACKET	1
6	9811.072	振动盘上压板	TOP PRESSPLATE	1
7	9811.073	锯齿选料板	SAWTOOTH PLATE	2
8	9811.074	斜口选料板	DIAGONAL PLATE	1
9	9811.075	振动盘挡料板	STOP PLATE	2
10	9811.111	盘头螺钉 M5*8	SCREW M5*8	16
11	9811.120	沉头螺钉 M4*10	SCREW M4*10	4
12	9811.119	盘头螺钉 M4*10	SCREW M4*10	8
13	9811.129	螺钉 M3*10	SCREW M3*10	2

六、附件部件 ACCESSORIES COMPONENTS



附件部件

ACCESSORIES COMPONENTS LIST

序号 NO	件号 PARTS NO	名称	DESCRIPTION	数量 Qty
1	9811.080	上扣压板	PRESSBOARD	2
2	9811.085	镊子	TWEEZERS	1
3	9811.086	内六角扳手	ALLEN KEYS	1
4	9811.087	活动扳手	MONKEY WRENCH	1
5	9811.088	开口扳手	OPEN SPANNER	1
6	9811.141	下扣模具	DOWN MOULD	4
7	9811.143	上扣模具	TOP MOULD	4
8	9811.150	定位板	POSITIONING PLATE	8