



S7-91-T (单针/Single Needle)

S7-92-T (双针/Double Needle)

# 产品使用说明书&产品零件图册

## Manual book & parts book

# JACK 杰克



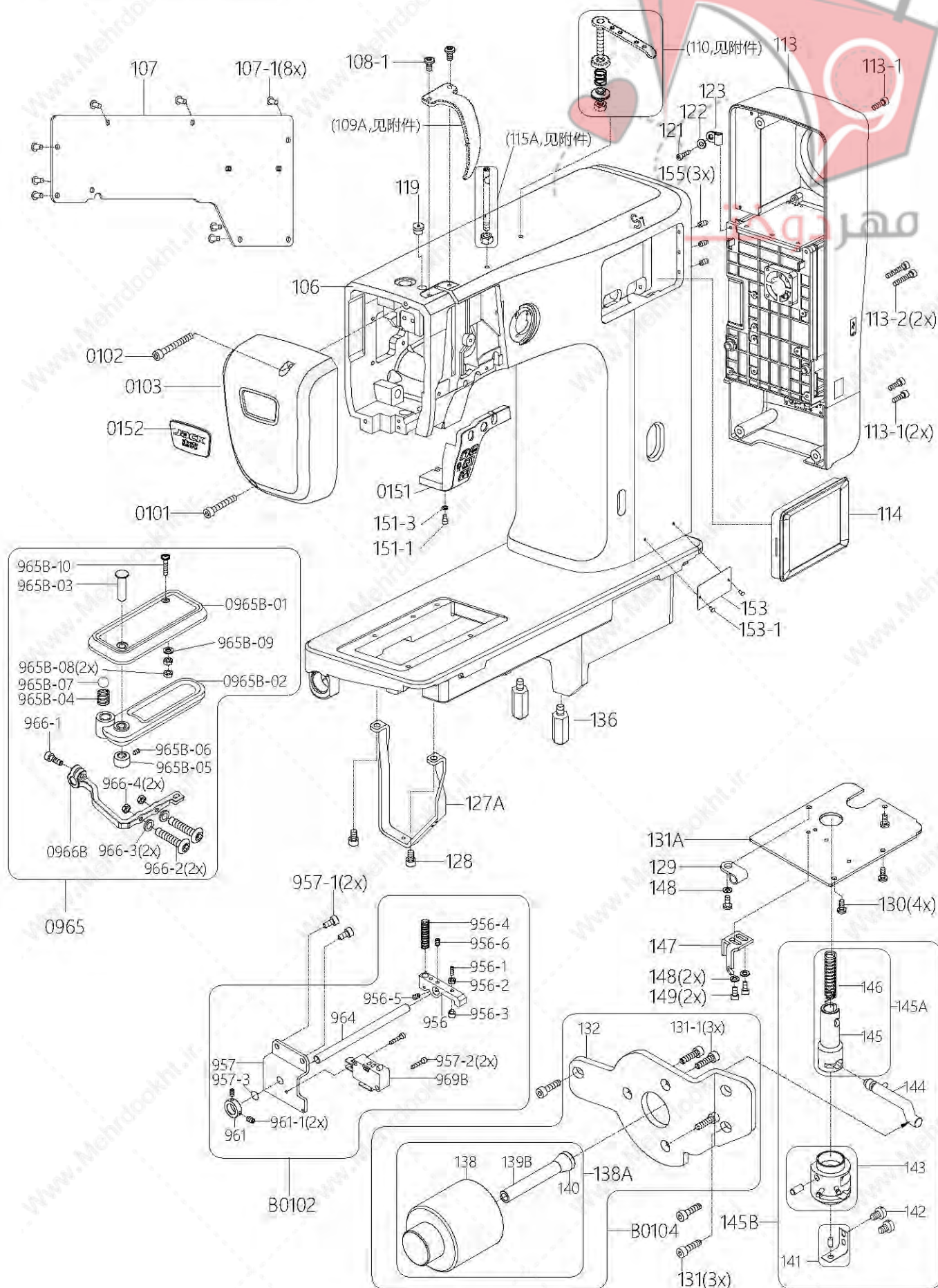
## 零件手册/Parts book

1. 本体机构	
Arm bed and it's accessorie .....	01
2. 压棒机构	
Presser foot bar mechanism .....	05
3. 天平及针棒摇动台机构	
Take-up lever & needle bar rocking mechanism .....	09
4. 缝线压力调整机构	
Upper thread tension regulation mechanism .....	11
5. 主轴传动机构	
Main shaft transmission mechanism .....	13
6. 剪线机构	
Thread trimming mechanism .....	15
7. 轮钱、倒针机构	
Roller presser foot & backstitching mechanism .....	17
8. 右边座机构	
Right side bracket mechanism .....	19
9. 单针中座机构	
Single needle central bracket mechanism .....	23
10. 双针左边座及中座机构	
Double needle left side bracket & central bracket mechanis .....	25
11. 随机附件	
Accessories .....	27
12. 电器连接图	
Electrical connection diagram .....	29



1 本体机构  
Arm bed and it's accessories

1 本体机构  
Arm bed and it's accessories





## 1 本体机构

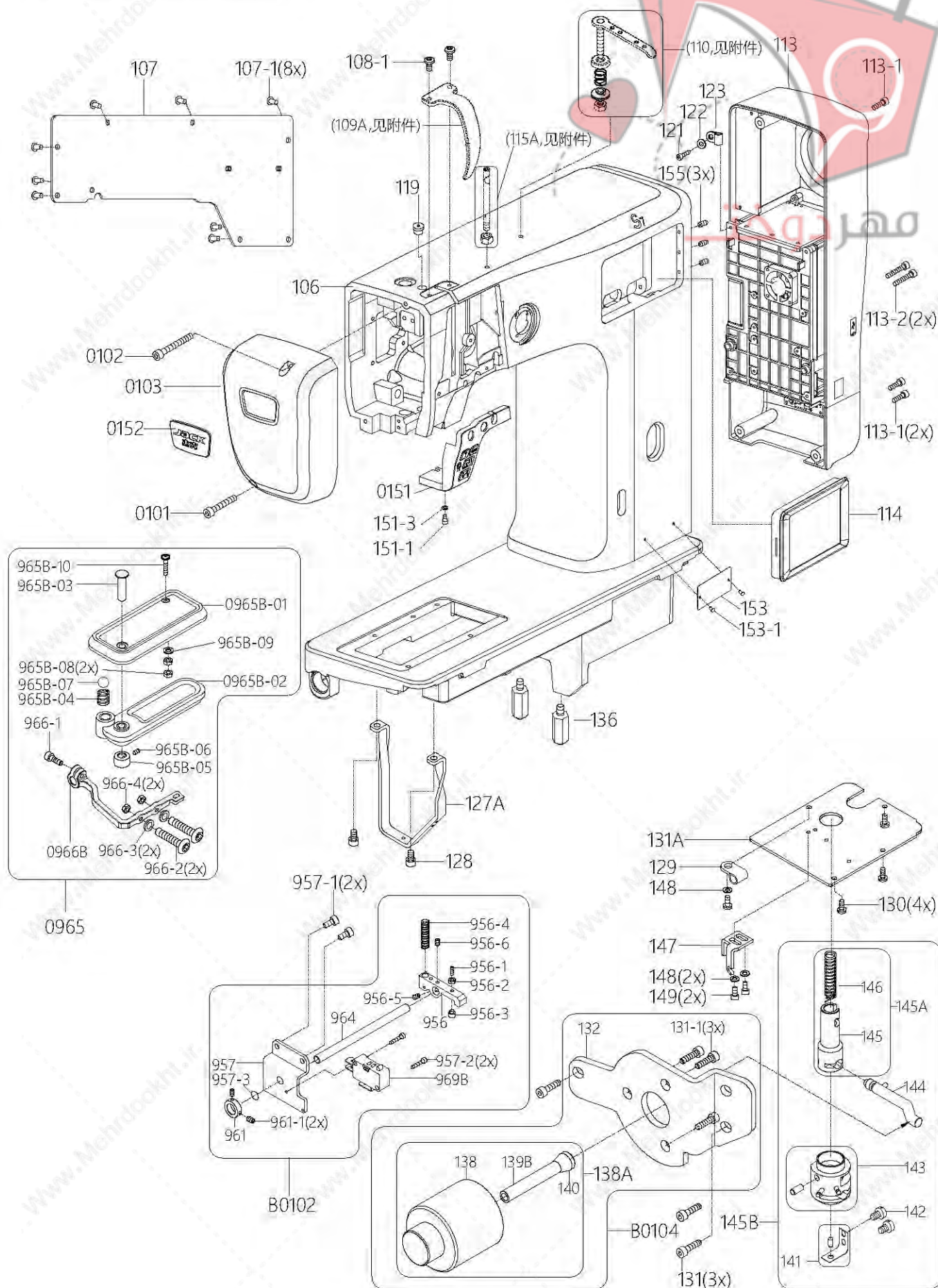
### Arm bed and it's accessories

序号 NO.	件号 Part No.	零部件名称 PartName	零件描述 Description	数量 Amt.		备注
				S7-91-T	S7-92-T	
0101	S05083	内六角圆柱头螺钉M5×30(镀镍)	Screw pan M5×30(Nickelpated)	1	1	
0102	421S13046	内六角圆柱头螺钉M5×45(镀镍)	Screw pan M5×45(Nickelpated)	1	1	
0103	930000153	面板	Face palte(Painting)	1	1	喷漆
106	930000374	机壳组件	Machine shell components(Painting)	1	1	喷漆
107	930000470	后窗板	Cover(Painting)	1	1	喷漆
107-1	S17884	内六角平圆头螺钉M5×10(镀镍)	Screw pan M5×10(Nickelpated)	8	8	
108-1	S17884	内六角平圆头螺钉M5×10(镀镍)	Screw pan M5×10(Nickelpated)	2	2	
113	15583000100	电控组件二代	Machine electronic control	1	1	
113-1	S05954	内六角圆柱头螺钉M5×16	Screw pan M5×16	3	3	
113-2	S05956	内六角圆柱头螺钉M5×25	Screw pan M5×25	2	2	
114	15553000100	操作面板组件	Panel	1	1	
119	155211003	油盖	Rubber plug	1	1	
121	S05949	内六角圆柱头螺钉M4×8	Screw pan M4×8	1	1	
122	W01145	平垫圈M4	Flat washer M4	1	1	
123	155211010	油管护架	Tubing guard	1	1	
127A	155212004	支架	Bracket	1	1	
128	S05962	内六角圆柱头螺钉M6×12	Screw pan M6×12	2	2	
129	155211015	R线夹12.7	R type clamp 12.7	1	1	
130	1550NS11001	一字圆柱头螺钉M5×10	Screw pan M5×10	4	4	
131	S05962	内六角圆柱头螺钉M6×12	Screw pan M6×12	3	3	
131A	155212042	底盘座	Bottom cover	1	1	
136	1552NS30001	六角钢	Bed leg	2	2	
B0104	950800129	抬压脚电磁铁组件部装	Presser foot lifter electromagnet assembly	1	1	
145B	15520200700	膝控抬压脚(组件)	Knee lifter lever	1	1	
147	155212008	拉簧座	Tension spring seat	1	1	
148	W01146	平垫圈M5	Flat washer M5	3	3	
149	S05959	内六角圆柱头螺钉M5×8	Screw pan M5×8	2	2	
0151	15573000500	机头灯组件	Light switch assembly	1	1	
151-1	S05941	内六角圆柱头螺钉 M3×6	Screw pan M3×6	2	2	
151-3	W01144	平垫圈M3	Flat washer M3	2	2	
0152	155701004	商标牌	Trade mark	1	1	
153	155237001	空白型号牌	Type number plate	1	1	
153-1	R03008	型号牌铆钉2.5×5	Rivet 2.5×5	2	2	
155	S10072	内六角凹端紧定螺钉M4×10	Screw pan M4×10	3	3	
956	155209018	开关压板	Switch plate	1	1	
956-1	S10073	内六角凹端紧定螺钉M4×16	Screw pan M4×16	1	1	
956-2	N01103	六角螺母M4	Nut M4	1	1	
956-3	155226009	限位柱	Limit column	1	1	
956-4	155227004	栓销弹簧	Pin spring	1	1	
956-5	S10080	内六角凹端紧定螺钉M5×6	Screw pan M5×6	1	1	
956-6	S10074	内六角凹端紧定螺钉M4×4	Screw pan M4×4	1	1	
957	155212038	倒缝扳手座	Reverse feed lever fixing plate	1	1	
957-1	S05951	内六角圆柱头螺钉M5×10	Screw pan M5×10	2	2	
957-2	S05938	内六角圆柱头螺钉M3×14	Screw pan M3×14	2	2	
957-3	O01151	O型橡胶密封圈	O-ring	1	1	
961	155008007	定环	Stationary ring	1	1	
961-1	1550NS14001	内六角凹端紧定螺钉M6×0.75×6	Screw pan M6×0.75×6	2	2	
964	155502001	倒缝扳手轴	Reverse feed lever shaft	1	1	
0965	950800228	倒缝扳手组件部装	Reverse wrench assembly	/	/	



1 本体机构  
Arm bed and it's accessories

1 本体机构  
Arm bed and it's accessories



## 1 本体机构

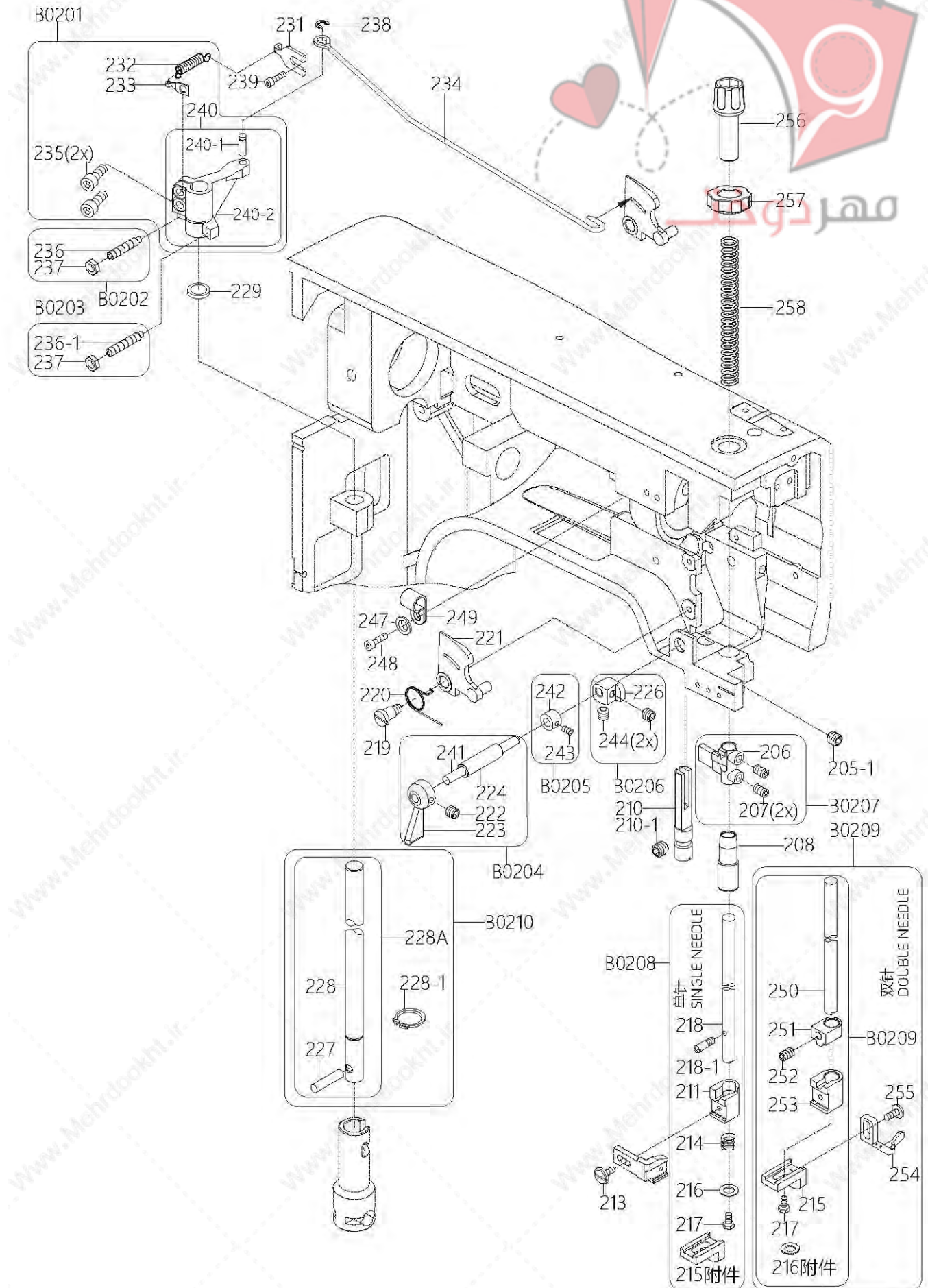
Arm bed and it's accessories

序号 NO.	件号 Part No.	零部件名称 PartName	零件描述 Description	数量 Amt.		备注
				S7-91-T	S7-92-T	
0965B-01	155744001	倒缝扳手上盖	Cover for reverse wrench	1	1	
0965B-02	15574400200	旋转扳手组件	Rotary wrench assembly	1	1	
965B-03	155226010	固定销	Dowel pin	1	1	
965B-04	155227011	弹簧	Spring M4×5	1	1	
965B-05	155208001	锁圈	Lock ring	1	1	
965B-06	S10074	内六角凹端紧定螺钉M4×4	Screw pan M4×4	1	1	
965B-07	155209020	钢珠Sq8	Steel ball Sq8	1	1	
965B-08	N01105	六角螺母M3	Nut M3	2	2	
965B-09	W01144	平垫圈M3	Flat washer M3	1	1	
965B-10	S17902	内六角圆头带垫螺钉M3×16(镀镍)	Screw pan M3×16(Nickelpated)	1	1	
0966B	155705001	倒缝扳手连杆	Reverse wrench connecting rod	1	1	
966-1	S05951	内六角圆柱头螺钉M5×10	Screw pan M5×10	1	1	
966-2	S04234	内六角平圆头螺钉M4×14	Screw pan M4×14	2	2	
966-3	W01145	平垫圈M4	Flat washer M4	2	2	
966-4	N01103	六角螺母M4	Nut M4	2	2	
969B	15523001300	点动开关	Inching switch	1	1	
0970	950800235	倒缝点动开关组件部装	Reverse inching switch assembly	/	/	



## 2 压棒机构

### Presser foot bar mechanism





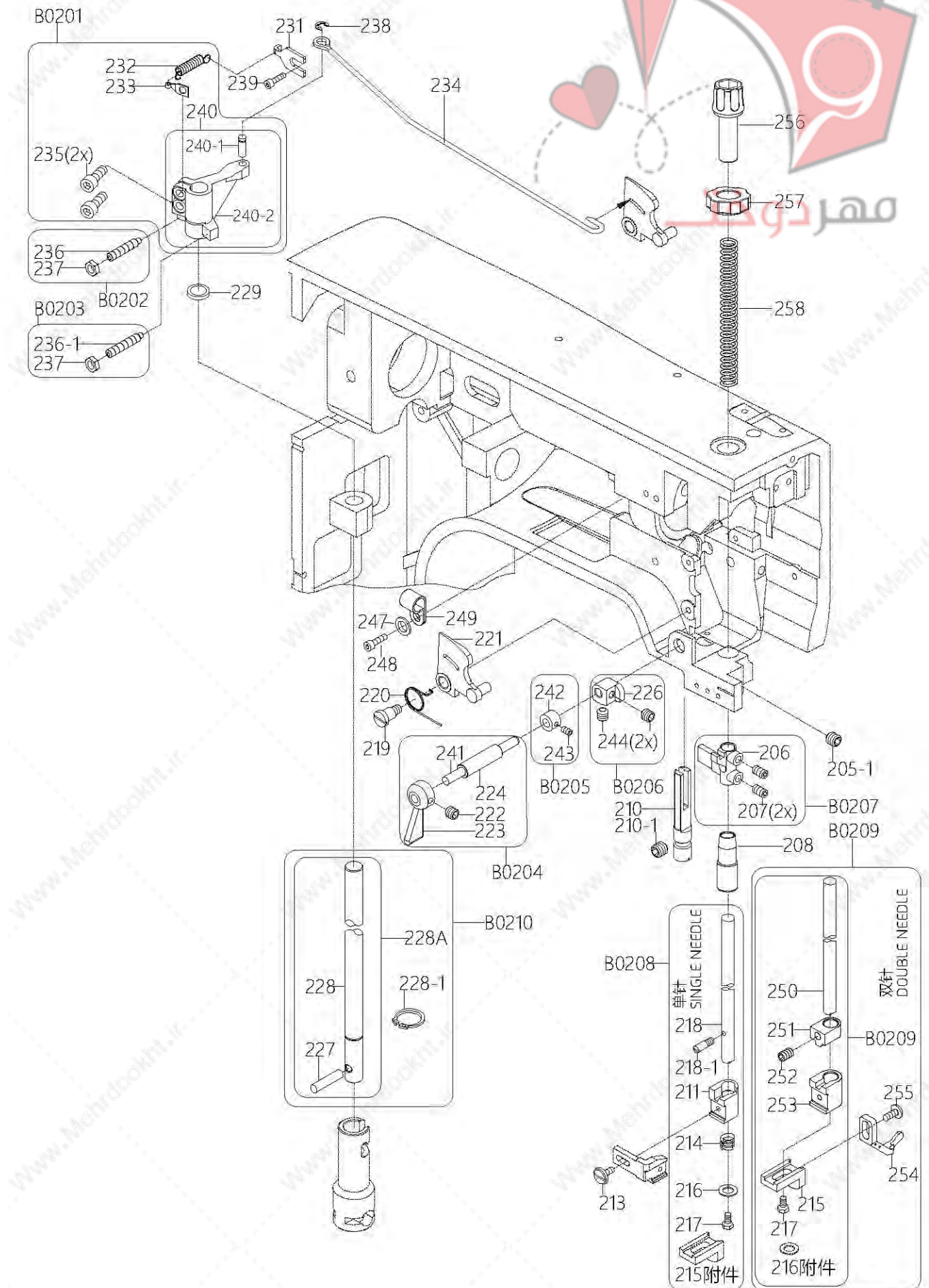
## 2 压棒机构

### Presser foot bar mechanism

序号 NO.	件号 Part No.	零部件名称 PartName	零件描述 Description	数量 Amt.		备注
				S7-91-T	S7-92-T	
205-1	S10079	内六角锥端紧定螺钉M5×5	Screw pan M5×5	1	1	
206	155001001	压棒固定座	Setting seat of pressure bar	1	1	
207	1550NS14001	内六角凹端紧定螺钉M6×0.75×6	Screw pan M6×0.75×6	2	2	
208	155503002	压棒下套管	Running casing of pressure bar	1	1	
210	155009001	导轨棒	Guide rods	1	1	
210-1	S10081	内六角凹端紧定螺钉M5×8	Screw pan M5×8	1	1	
211	155201004	轮前下座	Front seat	1	0	
213	1550NS11012	一字圆柱头螺钉	Screw	1	1	
214	155027001	弹簧	Spring	1	1	
215	155009002	顶针座	Thimble seat	0	1	
216	155228010	平垫圈	Flat washer	1	0	
217	1552NS12002	外六角螺丝	Bolt	1	1	
218	155202001	压棒	Pressure bar	1	0	
218-1	1550NS15001	螺钉	Screw	1	0	
219	1550NS11003	一字圆柱头螺钉	Screw	1	1	
220	155027002	弹簧	Spring	1	1	
221	155004001	沙拉心座组	Bobbin thread tensionasm	1	1	
222	S10080	内六角凹端紧定螺钉M5×6	Screw pan M5×6	1	1	
223	930000148	压棒提杆	Lifting rod of pressure bar(Painting)	1	1	喷漆
224	155203001	压棒提杆套管	Lifting sleeve of pressure bar	1	1	
226	155201006	压棒提升器	Lifter of pressure bar	1	1	
228A	155002001	压脚长轴组件	Presser foot long axis	1	1	
228-1	H03066	轴用弹性挡圈12	Circlips for shaft 12	1	1	
229	155028001	调整垫片	Washer	1	1	
231	155012001	弹簧固定板	Spring fixing plate	1	1	
232	155227003	离合拉簧	Clutch spring	1	1	
233	155012002	弹簧固定板	Spring fixing plate	1	1	
234	155227001	脚弓连接杠杆	Arch connecting lever	1	1	
235	S05952	内六角圆柱头螺钉M5×12	Screw pan M5×12	2	2	
236	S12031	内六角圆柱端紧定螺钉M6×30	Screw pan M6×30	1	1	
236-1	S09157	内六角圆柱端紧定螺钉M6×35	Screw pan M6×35	1	1	
237	N01104	六角螺母M6	Nut M6	2	2	
238	H05026	开口挡圈4	E rings 4	1	1	
239	S05967	内六角圆柱头螺钉M6×8	Screw pan M6×8	1	1	
240	155004003	上下输送臂	Upper and lower conveying arm	1	1	
241	155202002	压棒提杆轴	Pressure rod lifting shaft	1	1	
242	155208001	锁圈	Lock ring	1	1	
243	S10074	内六角凹端紧定螺钉M4×4	Screw pan M4×4	1	1	
244	S10080	内六角凹端紧定螺钉M5×6	Screw pan M5×6	2	2	
247	W01145	平垫圈M4	Flat washer M4	1	1	
248	S05949	内六角圆柱头螺钉 M4×8	Screw pan M4×8	1	1	
249	155211010	油管护架	Tubing guard	1	1	
250	155202020	压棒(双针)	Pressure bar(Double needle)	0	1	
251	155303001	送料轮前上座(双针)	Front upper seat of feeding wheel(Double needle)	0	1	
252	S10080	内六角凹端紧定螺钉M5×6	Screw pan M5×6	0	1	
253	155301003	轮钱下座(双针)	Below seat of wheel (Double needle)	0	1	
254	155301005	双针带护手靠边	Pull aside with hand guard (Double needle)	0	1	
255	1550NS11013	一字圆柱头螺钉	Screw	0	1	

## 2 压棒机构

### Presser foot bar mechanism





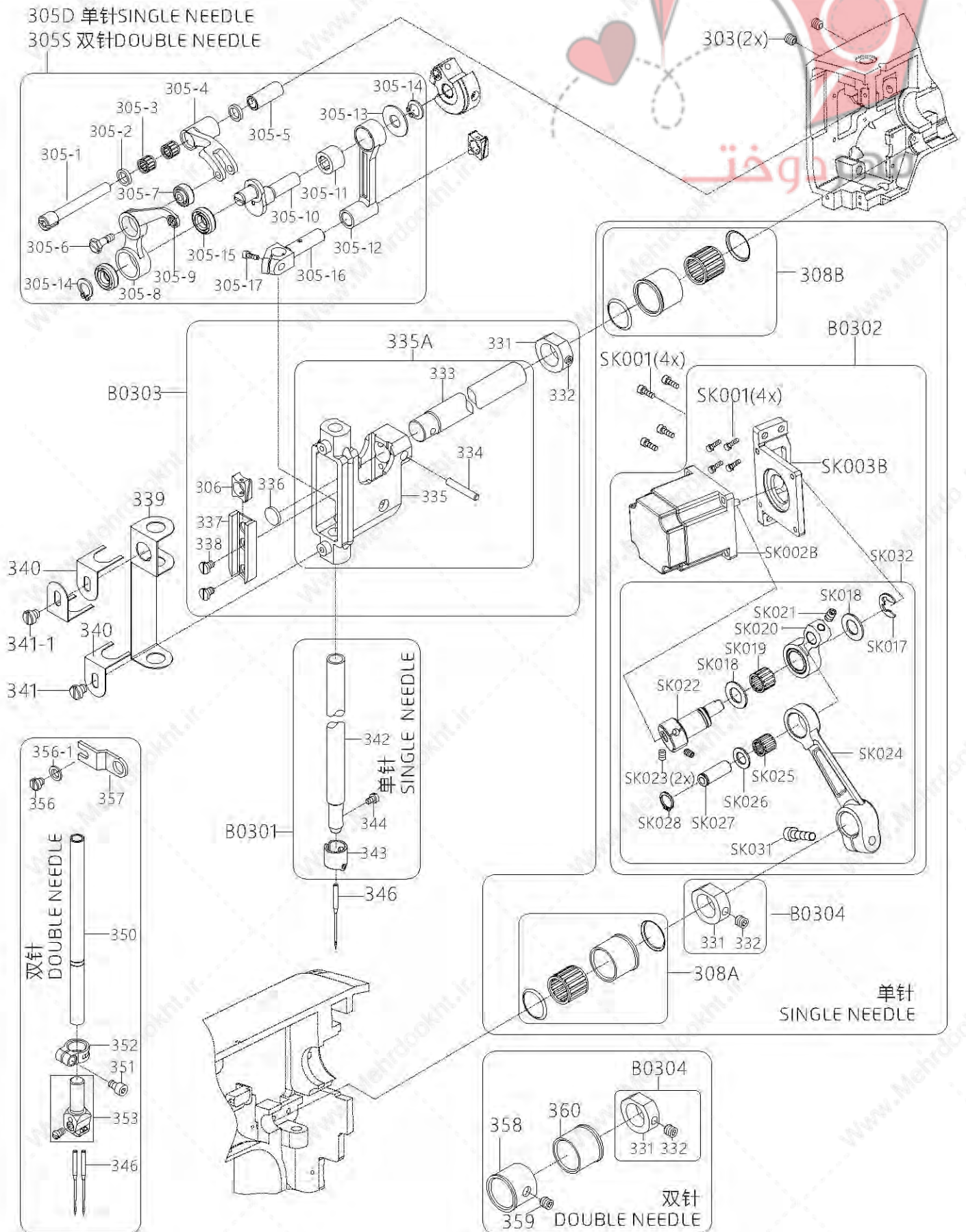
## 2 压棒机构

### Presser foot bar mechanism

序号 NO.	件号 Part No.	零部件名称 PartName	零件描述 Description	数量 Amt.		备注
				S7-91-T	S7-92-T	
256	155544001	压脚调压旋钮	Lifting presser adjusting screw	1	1	
257	1555NS16001	调压旋钮螺母	Lifting presser adjusting nut	1	1	
258	155527001	压脚压簧	Lifting presser spring	1	1	
B0201	950800126	上下输送臂部装	Upper and lower conveying arm assembly	/	/	
B0202	950800120	上下输送臂限位螺钉(短)部装	Screw assembly (short)	/	/	
B0203	950800121	上下输送臂限位螺钉(长)部装	Screw assembly (long)	/	/	
B0204	950800122	压棒提杆部装	Lifting rod of pressure bar assembly	/	/	
B0205	950800123	压棒提升轴锁圈部装	Lock ring assembly	/	/	
B0206	950800124	压棒提升器部装	Lifter of pressure bar assembly	/	/	
B0207	950800125	压棒固定座部装	Setting seat of pressure bar assembly	/	/	
B0208	950800127	单针压棒部装	Single needle pressure bar assembly	/	/	
B0209	950800158	双针压棒部装	Double needle pressure bar assembly	/	/	
B0210	950800128	压脚长轴部装	Presser foot long axis assembly	/	/	

### 3 天平及针棒摇动台机构

Take-up lever & needle bar rocking mechanism





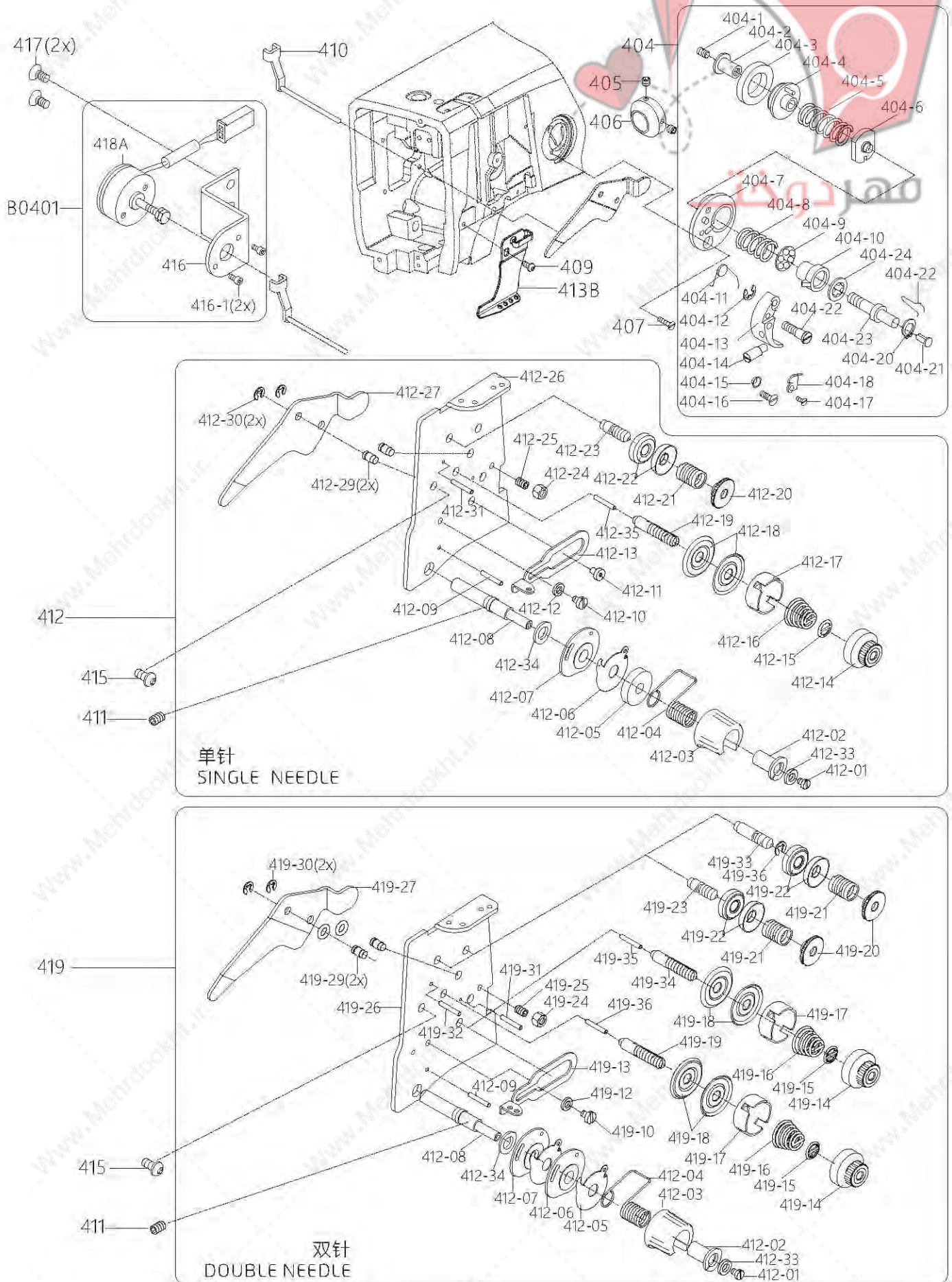
### 3 天平及针棒摇动台机构

#### Take-up lever & needle bar rocking mechanism

序号 NO.	件号 Part No.	零部件名称 PartName	零件描述 Description	数量 Amt.		备注
				S7-91-T	S7-92-T	
303	S10081	内六角凹端紧定螺钉M5×8	Screw pan M5×8	2	2	
305	15523800200	单针天平组件	Thread take-up asm(Single needle)	1	0	
305	15523800100	双针天平组件	Thread take-up asm(Double needle)	0	1	
306	155009003	针棒道引滑块	Needle bar guide slider	1	1	
308A	15512400100	培林套管组件(ø23)	Casing of bearing(ø23)	1	0	
308B	15512400200	培林套管组件(ø24)	Casing of bearing(ø24)	1	0	
331	155008001	固定环	Retaining ring	2	2	
332	1550NS14001	内六角凹端紧定螺钉M6×0.75×6	Screw pan M6×0.75×6	2	2	
335A	15520101100	针棒座组件	Needle bar support frame	1	1	
336	155023001	油棉	Oil cotton	1	1	
337	155009004	针棒连接器导槽	Needle bar connecting link guide	1	1	
338	1550NS11013	一字圆柱头螺钉	Screw	2	2	
339	155023002	油棉	Oil cotton	1	1	
340	155012017	油棉压板	Pressboard of oil cotton	3	3	
341	1550NS11013	一字圆柱头螺钉(薄)	Screw	1	1	
341-1	1550NS11019	一字圆柱头螺钉(厚)	Screw	1	1	
342	155002002	单针针棒	Needle bar	1	0	
343	155012004	针棒套环	Ring clamp	1	0	
344	1557NS11003	机针螺钉(进口)	Screw of needle (Imported)	1	0	
346	155217001	机针(INDP×5#16)	Needle INDP×5#16	1	2	
350	155002003	双针针棒	Needle bar(Double needle)	0	1	
351	S05949	内六角圆柱头螺钉M4×8	Screw pan M4×8	0	1	
352	155008002	针棒套环	Needle bar clamp ring	0	1	
353	15531700300	针榴组件(2.4规格)	Pin chuck 2.4	0	1	
356	1550NS11007	一字半圆头螺丝M5×8	Screw M5×8	0	1	
356-1	W01146	平垫圈M5	Flat washer M5	0	1	
357	155012005	针棒座固定板	Guide plate	0	1	
358	155303002	摆针轴左套管	Left casing	0	1	
359	S10089	内六角凹端紧定螺钉M6×12	Screw pan M6×12	0	1	
360	155003005	摆针轴右套管	Right casing	0	1	
SK001	S05952	内六角圆柱头螺钉M5×12	Screw pan M5×12	8	0	
SK002B	15583300400	针摆电机600线	Needle motor	1	0	
SK003B	155501001	摆针电机支架	Bracket for needle motor	1	0	
SK032	15550500300	摆针连杆组件	Needle connecting rod assembly	1	0	
B0301	950800239	单针针棒部装	Needle bar assembly	/	/	
B0302	950800234	针摆电机部装	Needle motor assembly	/	/	
B0303	950800130	针棒座部装	Needle bar support frame assembly	/	/	
B0304	950800148	上边心轴固定环部装	Retaining ring assembly	/	/	

## 4 缝线压力调整机构

Upper thread tension regulation mechanism





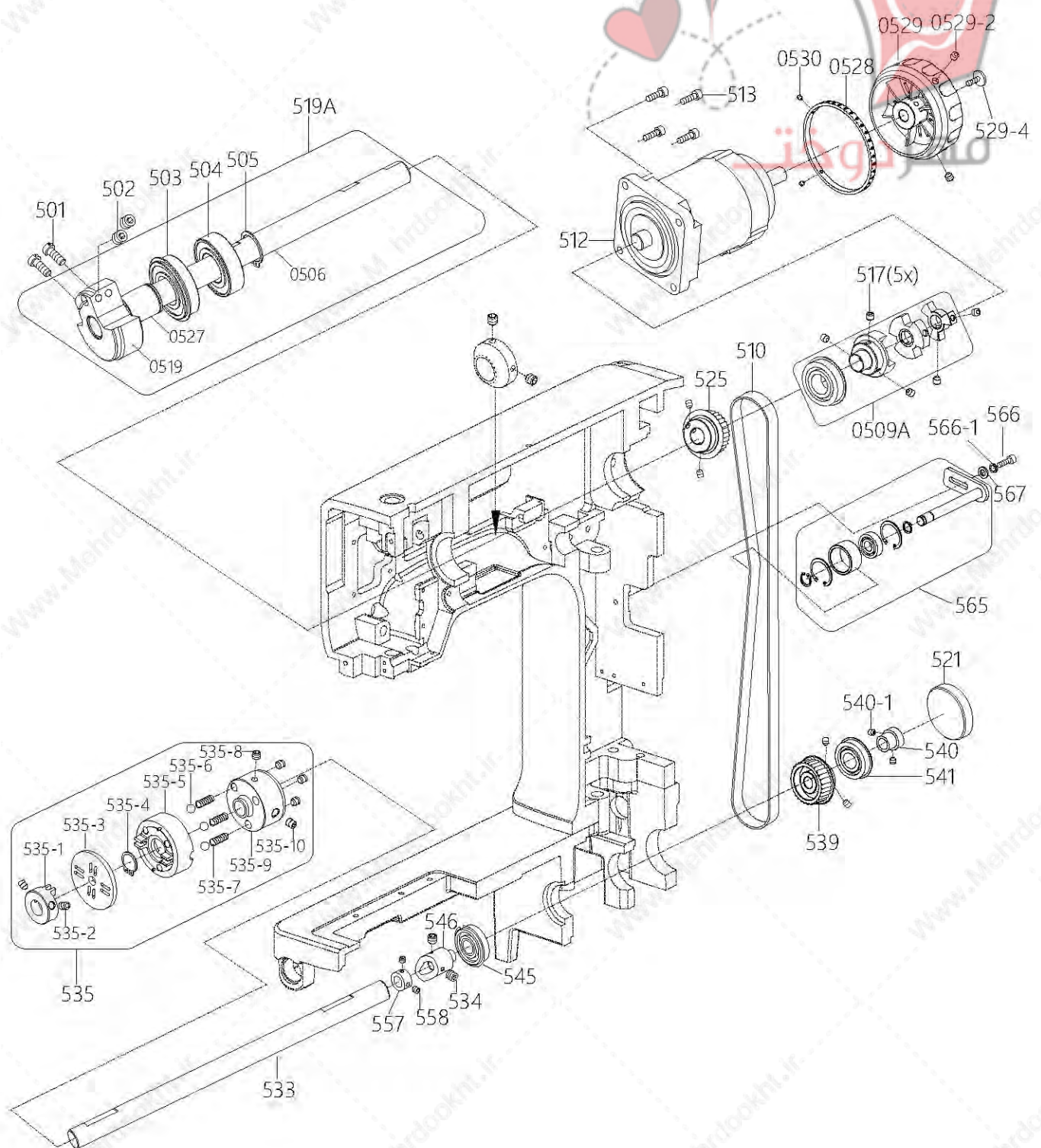
#### 4 缝线压力调整机构

##### Upper thread tension regulation mechanism

序号 NO.	件号 Part No.	零部件名称 PartName	零件描述 Description	数量 Amt.		备注
				S7-91-T	S7-92-T	
404	15521300100	绕线器组件	Bobbin-winder unit	1	1	
405	S10086	内六角凹端紧定螺钉M6×8	Screw pan M6×8	2	2	
406	155208003	锥形传动轮	Conical drive wheel	1	1	
407	1552NS17002	开槽沉头螺钉(镀镍)	Screw pan(Nickelpated)	1	1	
409	S17884	内六角平圆头螺钉M5×10(镀镍)	Screw pan M5×10(Nickelpated)	1	1	
410	15521201400	松线销组件	Tension releasing pin asm	1	1	
411	S10081	内六角凹端紧定螺钉M5×8	Screw pan M5×8	1	1	
412	15521300200	单针沙拉组件	Single needle Thread tension assembly	1	0	
413B	155213003	过线板	Thread tension guide plate	1	1	
415	S17883	内六角平圆头螺钉M4×8(镀镍)	Screw pan M4×8(Nickelpated)	1	1	
416	155212015	松线阀座	Solenoid valve fixing plate	1	1	
416-1	S05940	内六角圆柱头螺钉M3×5	Screw pan M3×5	2	2	
417	S12029	内六角沉头螺钉M5×10	Screw pan M5×10	2	2	
418A	15523001800	电磁阀组件(松线)	Solenoid valve (loose thread)	1	1	
419	15521300300	双针沙拉组件	Double needle Thread tension assembly	0	1	
B0401	950800137	松线电磁铁部装	Solenoid valve (loose thread) assembly	/	/	

## 5 主轴传动机构

### Main shaft transmission mechanism





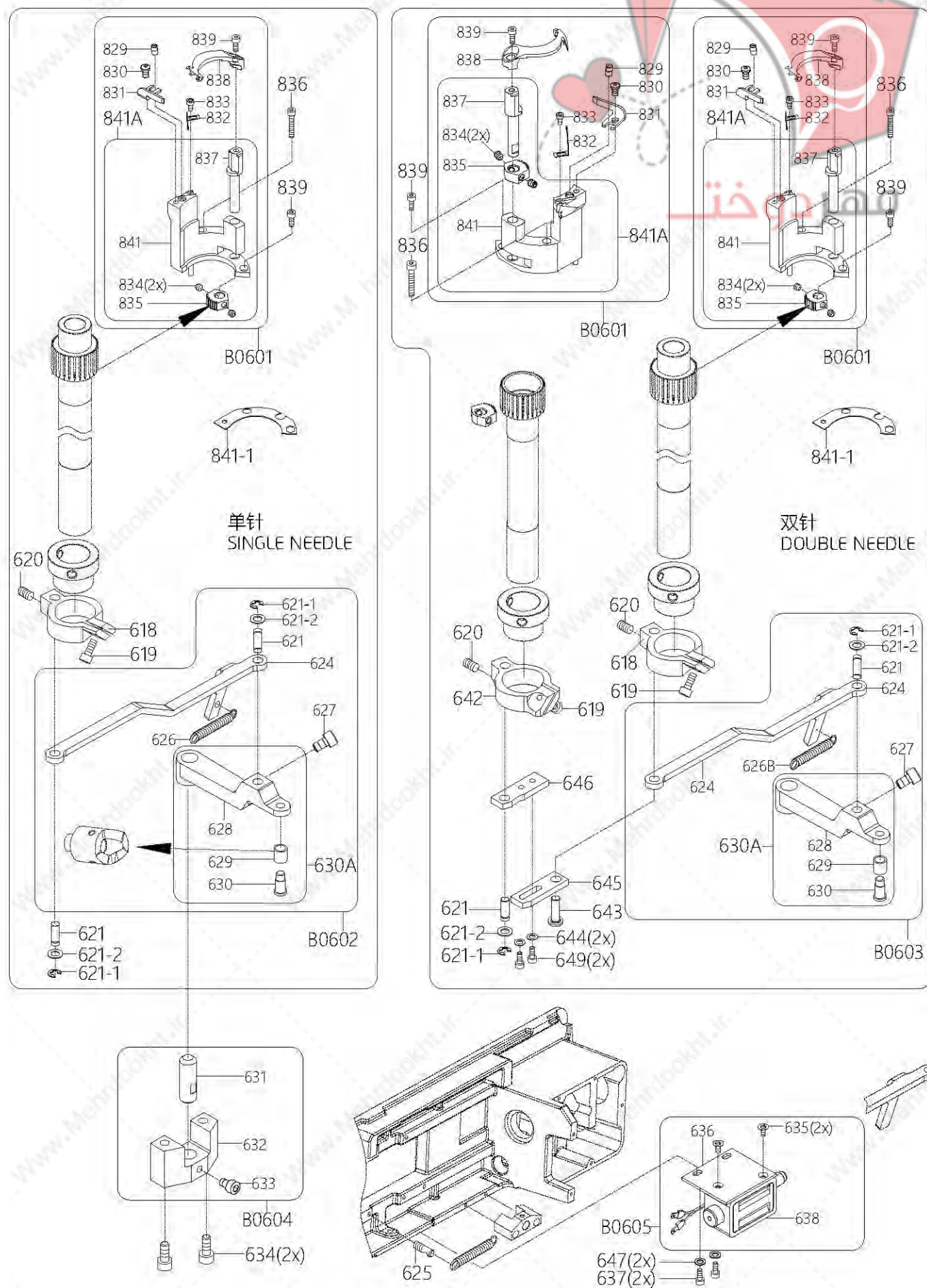
## 5 主轴传动机构

### Main shaft transmission mechanism

序号 NO.	件号 Part No.	零部件名称 PartName	零件描述 Description	数量 Amt.		备注
				S7-91-T	S7-92-T	
501	1550NS11001	一字圆柱头螺钉M5×10	Screw pan M5×10	2	2	
502	1550NS14001	内六角凹端紧定螺钉M6×0.75×6	Screw pan M6×0.75×6	2	2	
503	B02018	深沟球轴承(60/22ZZNR)	Ball bearing(60/22ZZNR)	1	1	
504	B04021	深沟球轴承(60/22ZZ)	Ball bearing(60/22ZZ)	1	1	
505	H03035	轴用弹性挡圈22	Circlips for shaft 22	1	1	
0509A	15570300600	联轴器组件(带轴承)	Coupling components	1	1	
510	155735005	同步带(加宽)	Synchronous belt	1	1	
512	15583300500	伺服电机600线	Motor	1	1	
513	S05955	内六角圆柱头螺钉M5×20	Screw pan M5×20	4	4	
517	S10092	内六角凹端紧定螺钉M6×0.75×8	Screw pan M6×0.75×8	5	5	
519A	15571000100	凸轮组件	Cam asm	1	1	
521	155011002	保护盖	Protection cap	1	1	
525	15573500300	上齿形带轮(加宽)组件	Timing wheel (Up)	1	1	
0528	155503003	刻度环	Scale ring	1	1	
0529	930000167	手轮	Handwheel(Painting)	1	1	喷漆
0529-2	S10086	内六角凹端紧定螺钉M6×8	Screw pan M6×8	2	2	
529-4	S17903	内六角圆头带垫螺钉M6×10(镀镍)	Screw pan M6×10(Nickelpated)	1	1	
0530	207514009	内六角平端紧定螺钉M3×3	Screw pan M3×3	2	2	
533	155202018	万向连接轴(单带)	Universal connecting shaft	1	1	
534	1550NS14001	内六角凹端紧定螺钉M6×0.75×6	Screw pan M6×0.75×6	2	2	
535	15520101400	离合器组件	Clutch assembly	1	1	
539	15573500400	下齿形带轮(加宽)组件	Timing wheel (down)	1	1	
540	155003007	轴承套管 (右)	Casing of bearing(right)	1	1	
540-1	1550NS14001	内六角凹端紧定螺钉M6×0.75×6	Screw pan M6×0.75×6	2	2	
541	155024006	滚珠培林 (BB6203ZZNR)	Ball bearing (BB6203ZZNR)	1	1	
545	155024013	滚珠培林 (BB6202ZZNR)	Ball bearing (BB6202ZZNR)	1	1	
546	155201015	剪线凸轮	Trimming cam	1	1	
557	155208005	定环	Fixed ring	1	1	
558	1550NS14001	内六角凹端紧定螺钉M6×0.75×6	Screw pan M6×0.75×6	2	2	
565	15550900300	带轮调节组件	Pulley regulate assembly(Single belt)	1	1	单带
566	S05952	内六角圆柱头螺钉M5×12	Screw pan M5×12(Single belt)	1	1	单带
566-1	W02001	弹簧垫圈M5	Spring washer M5(Single belt)	1	1	单带
567	W01146	平垫圈M5	Flat washer M5(Single belt)	1	1	单带

## 6 剪线机构

### Thread trimming mechanism





## 6 剪线机构

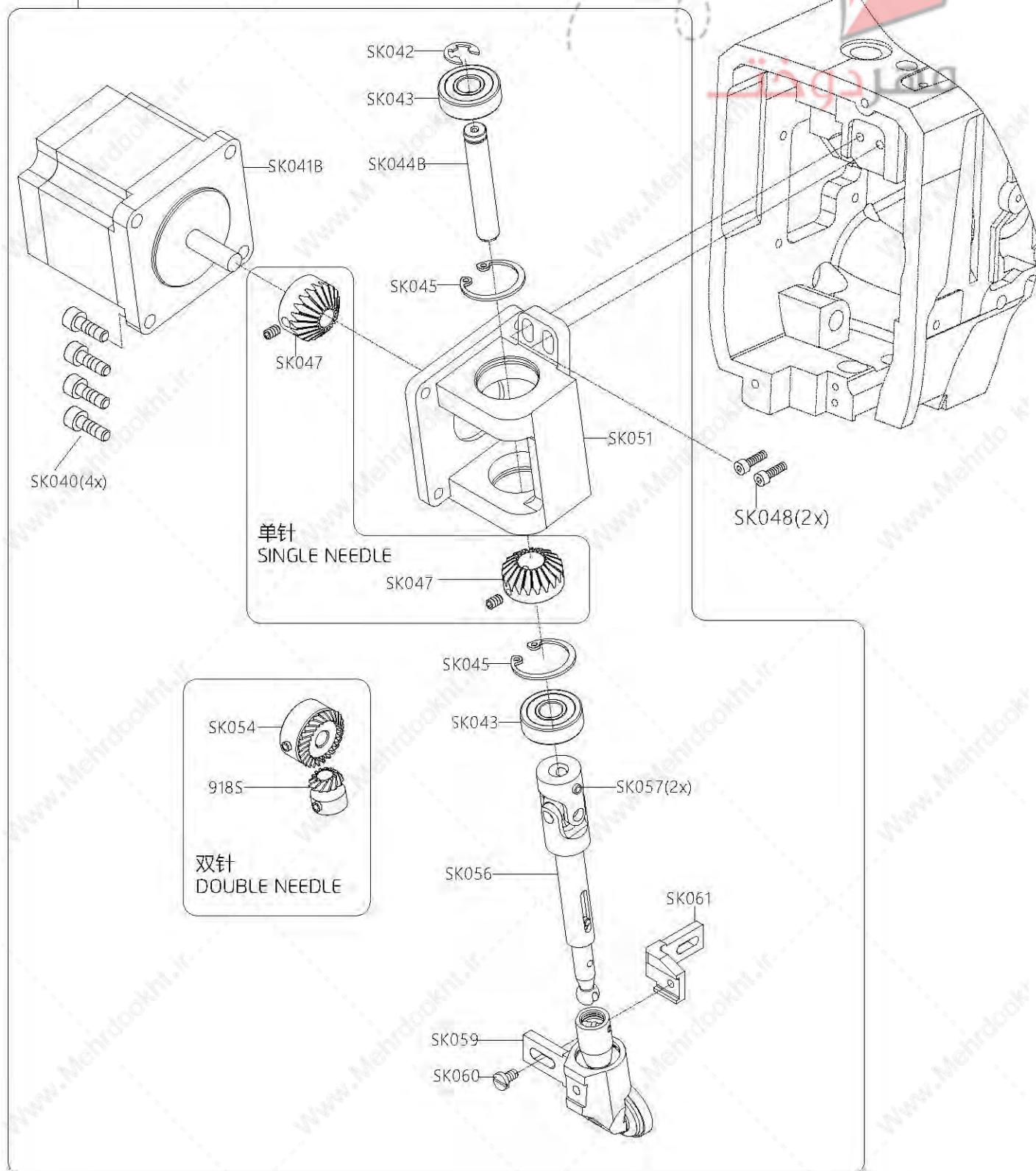
### Thread trimming mechanism

序号 NO.	件号 Part No.	零部件名称 PartName	零件描述 Description	数量 Amt.		备注
				S7-91-T	S7-92-T	
618	155204003	剪线摆杆架	Swinging rod	1	1	
619	S05951	内六角圆柱头螺钉M5×10	Screw pan M5×10	1	2	
620	S10080	内六角凹端紧定螺钉M5×6	Screw pan M5×6	1	2	
621	155226004	摆杆销(短)	Pendulum pin	2	2	
621-1	H05914	开口挡圈5	E rings 5	2	2	
621-2	W01147	平垫圈M6	Flat washer M6	2	2	
624	155212018	拉杆	Pull rod	1	1	
625	155226005	拉簧销	Tension spring pin	1	1	
626	155227005	拉簧	Tension spring	1	1	
627	S05959	内六角圆柱头螺钉M5×8	Screw pan M5×8	1	1	
630A	15520400800	离合器臂(组件)	Clutch arm (asm)	1	1	
631	155202007	离合器轴	Clutch shaft	1	1	
632	155209010	剪线座	Trimmer	1	1	
633	S05959	内六角圆柱头螺钉M5×8	Screw pan M5×8	1	1	
634	S05957	内六角圆柱头螺钉M5×30	Screw pan M5×30	2	2	
635	S12026	内六角沉头螺钉M4×6	Screw pan M4×6	2	2	
636	155212019	电磁铁固定板	Electromagnet fixing plate	1	1	
637	S05951	内六角圆柱头螺钉M5×10	Screw pan M5×10	2	2	
638	15523000600	电磁铁(剪线)	Electromagnet(trimming)	1	1	
642	155205005	双针左摆杆	Double needle left swing rod	0	1	
643	155226006	摆杆销	Pendulum pin	0	1	
644	W01145	平垫圈M4	Flat washer M4	0	2	
645	155212020	切线连接块一	Tangent connecting plate I	0	1	
646	155212021	切线连接块二	Tangent connecting plate II	0	1	
647	W01146	平垫圈M5	Flat washer M5	2	2	
649	S05943	内六角圆柱头螺钉M4×10	Screw pan M4×10	0	2	
829	155226008	调节销	Adjustig pin	1	2	
830	1557NS20001	定刀螺钉(进口)	Screw of fixed knife(Imported)	1	2	
831	155219001	定刀	Fixed knife	1	2	
832	155212029	弹片	shrapnel	1	2	
833B	1557NS13003	夹线片螺钉(进口)	Screw of shrapnel (Imported)	1	2	
836	S05946	内六角圆柱头螺钉M4×25	Screw pan M4×25	1	2	
838	155219002	动刀	Moving knife	1	2	
839	S05943	内六角圆柱头螺钉M4×10	Screw pan M4×10	2	4	
841A	15520101900	刀座组件	Tool holder	1	2	
841-1	155212030	刀座垫片	Gasket of Tool holder	1	2	
B0601	950800241	刀座组件部装	Tool holder assembly	/	/	
B0602	950800144	剪线拉杆组件部装	Pull rod assembly(trimming)	/	/	
B0603	950800164	双针剪线拉杆组件部装	Double needle pull rod assembly(trimming)	/	/	
B0604	950800145	剪线拉杆固定座部装	Setting seat of pull rod assembly	/	/	
B0605	950800146	剪线电磁铁组件部装	Trimming electromagnet assembly	/	/	

## 7 轮钱、倒针机构

Roller presser foot & backstitching mechanism

B0701 单针 SINGLE NEEDLE  
B0702 双针 DOUBLE NEEDLE





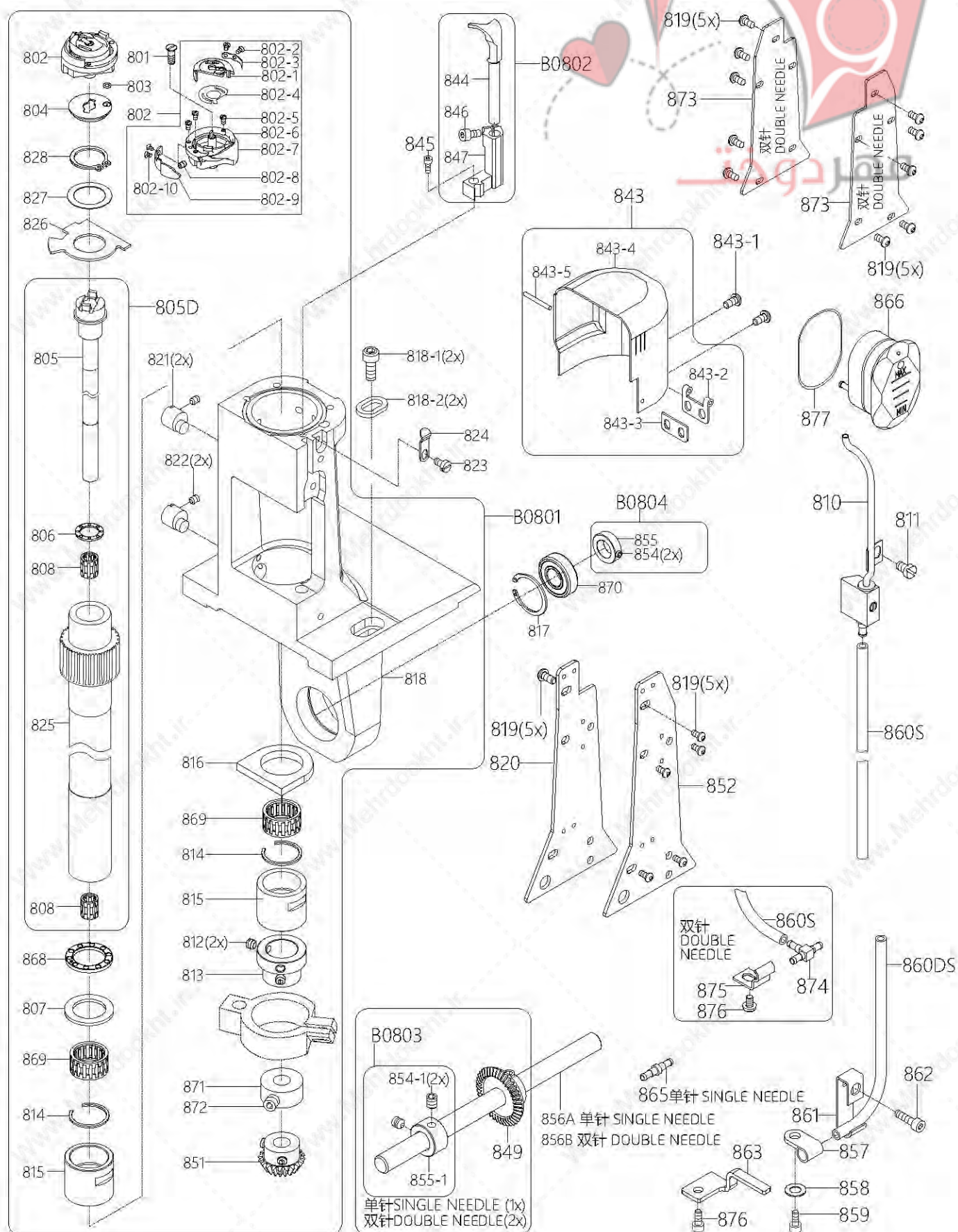
## 7 轮钱、倒针机构

### Roller presser foot & backstitching mechanism

序号 NO.	件号 Part No.	零部件名称 PartName	零件描述 Description	数量 Amt.		备注
				S7-91-T	S7-92-T	
SK040	S05952	内六角圆柱头螺钉M5×12	Screw pan M5×12	4	4	
SK041B	155833002	上下送料电机	Feeding motor	1	1	
SK042	H05914	开口挡圈5	E rings 5	1	1	
SK043	B04089	深沟球轴承(607Z)	Ball bearing(607Z)	2	2	
SK044B	155802002	轴	Shaft	1	1	
SK045	H01109	孔用弹性挡圈19	Circlips for hole 19	2	2	
SK046	S10080	内六角凹端紧定螺钉M5×6	Screw pan M5×6	0	4	
SK047	155225007	锥形齿轮	Gear	2	0	
SK048	S05954	内六角圆柱头螺钉M5×16	Screw pan M5×16	2	2	
SK051	155801001	上送料电机座	Seat of feeding motor	1	1	
SK054	155825001	大齿轮	Bevel gear(large)	0	1	
918S	155225011	送料小齿轮	Bevel gear(small)	0	1	
SK056	15580500300	万向联轴器组件	Universal coupling assembly	1	1	
SK057	S10074	内六角凹端紧定螺钉M4×4	Screw pan M4×4	2	2	
SK059	15522500300	轮钱组件	Roller press asm	1	1	
SK060	1550NS11012	一字圆柱头螺钉	Screw	1	1	
SK061	155201005	轮钱连接座	Connecting seat	1	1	
B0701	950800236	单针轮钱部装	Single needle roller press assembly	/	/	
B0702	15581600200	双针轮钱部装	Double needle roller press assembly	/	/	

8 右边座机构  
Right side bracket mechanism

Right side bracket mechanism





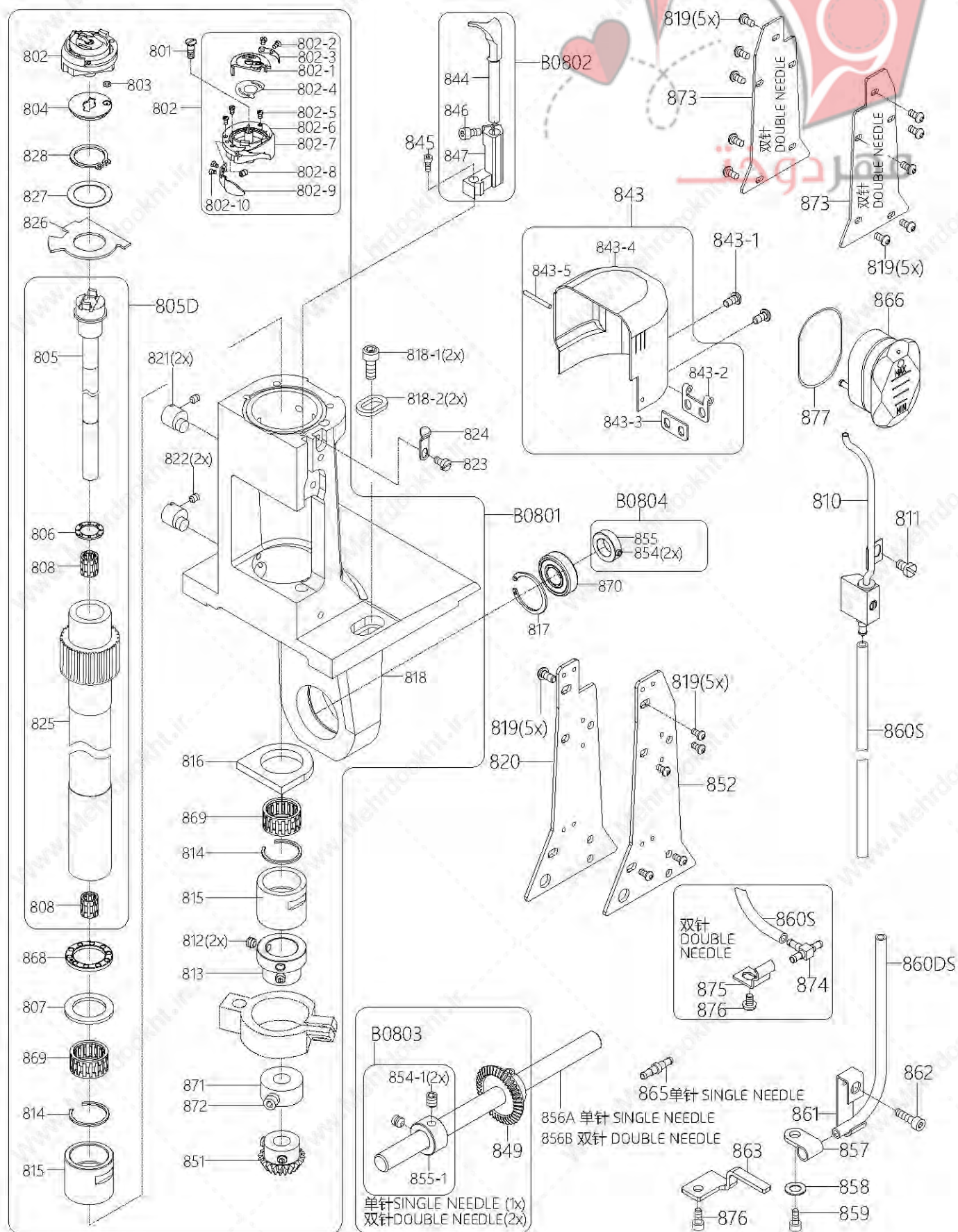
## 8 右边座机构

### Right side bracket mechanism

序号 NO.	件号 Part No.	零部件名称 PartName	零件描述 Description	数量 Amt.		备注
				S7-91-T	S7-92-T	
801	1550NS11014	一字沉头螺钉	Screw pan	1	1	
802	15521800100	旋梭组件	Hook asm	1	1	
803	O01154	O型圈	O-ring	1	1	
804	155209013	大釜护盖	Cauldron fender	1	1	
805D	15520201400	单针釜轴套管组件	Hook driver	1	1	
807	155228002	轴承垫片	Bearing gasket	1	1	
810	15522100200	油管(组件)	Tubing (asm)	1	1	
811	1550NS11013	一字圆柱头螺钉	Screw	1	1	
812	1550NS14001	内六角凹端紧定螺钉M6×0.75×6	Screw pan M6×0.75×6	2	2	
813	155208002	套管下紧圈	Running casing	1	1	
814	155229001	卡簧	Circlip	2	2	
815	155203009	斧轴套管	Axe shaft casing	2	2	
816	155223001	油棉垫	Oil cotton pad	1	1	
817	H01107	孔用弹性挡圈28	Circlips for hole 28	1	1	
818	930000057	右边座	Right side seat(Painting)	1	1	喷漆
818-1	S05963	内六角圆柱头螺钉M6×20(镀镍)	Screw pan M6×20(Nickelpated)	2	2	
818-2	155028002	垫片	Washer	2	2	
819	S17883	内六角平圆头螺钉M4×8(镀镍)	Screw pan M4×8(Nickelpated)	10	10	
820	930000058	前边盖板	Front side cover(Painting)	1	0	喷漆
821	155026003	调整销	Adjusting pin	2	2	
822	S10076	内六角凹端紧定螺钉M4×6	Screw pan M4×6	2	2	
823	1552NS11001	开槽圆柱头螺钉	Screw	1	1	
824	155212028	弹簧板	Spring plate	1	1	
826	155222001	橡皮垫	Rubber mat	1	1	
827	155228003	垫片	Washer	1	1	
828	H03069	轴用弹性挡圈20	Circlips for shaft 20	1	1	
843	15521203100	大釜盖组件	Post cap	1	1	
843-1	S17883	内六角平圆头螺钉M4×8(镀镍)	Screw pan M4×8(Nickelpated)	2	2	
844	155202015	牛角	Rotating hook opener	1	1	
845	S05944	内六角圆柱头螺钉M4×12	Screw pan M4×12	1	1	
846	S05949	内六角圆柱头螺钉M4×8	Screw pan M4×8	1	1	
847	155209014	牛角固定座	Rotating hook opener bracket	1	1	
849	155025003	大齿轮	Bevel gear(large)	1	2	
851	155025004	小齿轮	Bevel gear(small)	1	1	
852	930000059	后边盖板	Back side cover(Painting)	1	0	喷漆
854	1550NS14001	内六角凹端紧定螺钉M6×0.75×6	Screw pan M6×0.75×6	2	2	
854-1	1550NS14001	内六角凹端紧定螺钉M6×0.75×6	Screw pan M6×0.75×6	2	4	
855	155208005	定环	Fixed ring	1	1	
855-1	155008006	定环	Fixed ring	1	2	
856A	155802003	万向连接轴	Universal connecting shaft	1	0	
856B	155202017	万向连接轴	Universal connecting shaft	0	1	

8 右边座机构  
Right side bracket mechanism

Right side bracket mechanism





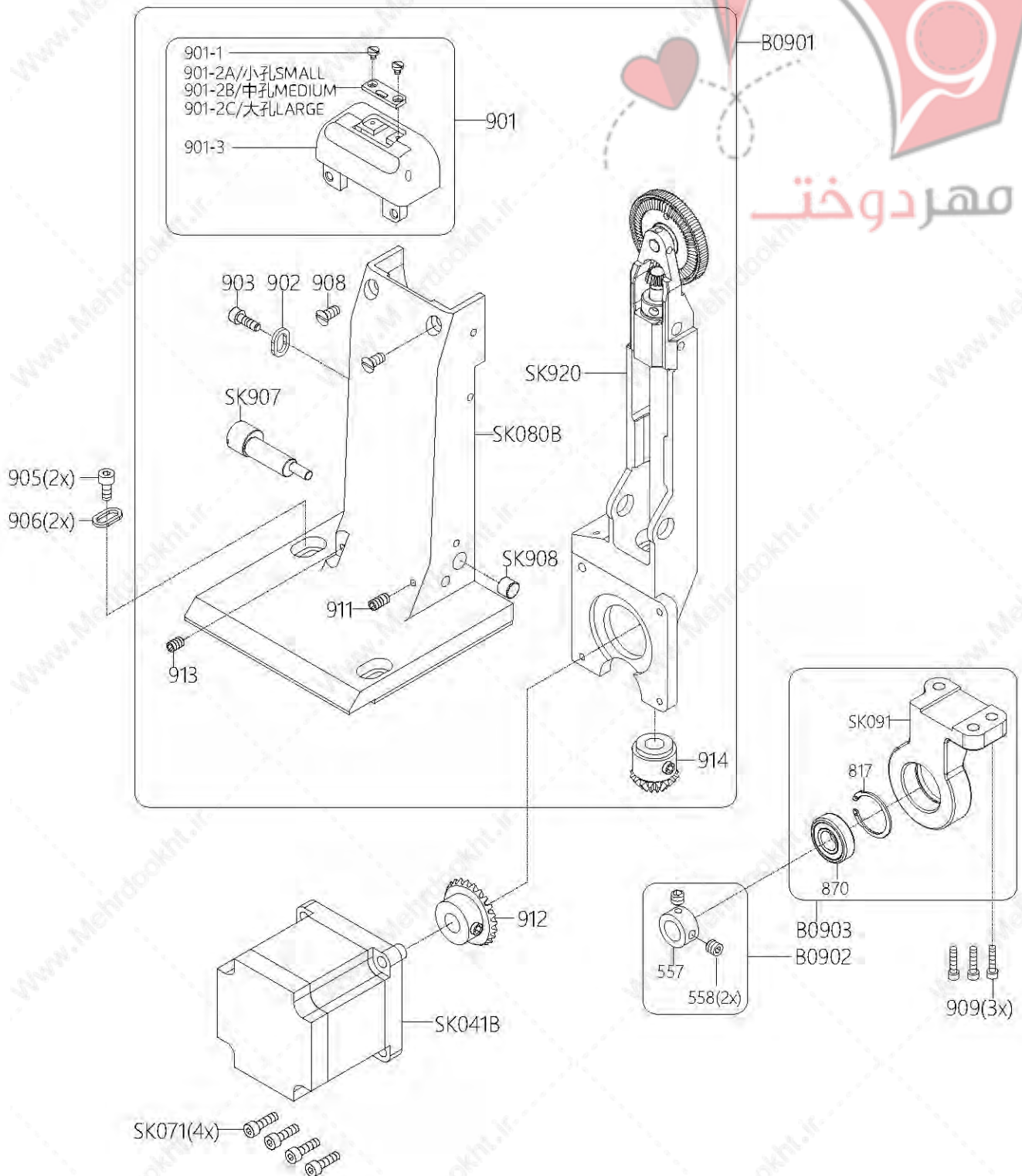
## 8 右边座机构

### Right side bracket mechanism

序号 NO.	件号 Part No.	零部件名称 PartName	零件描述 Description	数量 Amt.		备注
				S7-91-T	S7-92-T	
857	155211010	油管护架	Tubing guard	1	1	
858	W01145	平垫圈M4	Flat washer M4	1	1	
859	S05949	内六角圆柱头螺钉M4×8	Screw pan M4×8	1	1	
860DS	155221006	油管(600mm)	Tubing (600mm)	1	1	
860S	155221001	油管	Tubing	1	2	
861	155212033	线卡	Ply-yard drill	1	1	
862	S05945	内六角圆柱头螺钉M4×16	Screw pan M4×16	1	1	
863	155212034	护线架	Thread guard	1	1	
865	155236001	油管接头	The tubing connector	1	0	
866	155211011	油镜	Oil mirror	1	1	
868	155224013	平面轴承	Plane bearing	1	1	
869	155224014	滚针培林	Needle bearing	2	2	
870	B01046	滚珠培林(6001-2RZ/Z2)	Ball bearing(6001-2RZ/Z2)	1	1	
871	155208006	定环	Stationary ring	1	1	
872	S09174	内六角平端紧定螺钉M6×0.75×4	Screw pan M6×0.75×4	2	2	
873	930000060	双针边盖板	Side cover (Double needle)	0	2	
874	155236002	油管接头 三通	Oil pipe(tee joint)	0	1	
875	155212036	线卡	Ply-yard drill	0	1	
876	S05949	内六角圆柱头螺钉M4×8	Screw pan M4×8	1	2	
877	O01148	O型圈 32×1	O-ring 32×1	1	1	
B0801	15521800600	右边座部装	Right side bracket assembly	/	/	
B0802	950800162	牛角固定座组件部装	Rotating hook opener bracket assembly	/	/	
B0803	950800153	釜轴传动大齿轮定环部装	Retaining ring assembly	/	/	
B0804	950800140	剪线拉杆限位定环部装	Retaining ring assembly	/	/	

## 9 单针中座机构

### Single needle central bracket mechanism





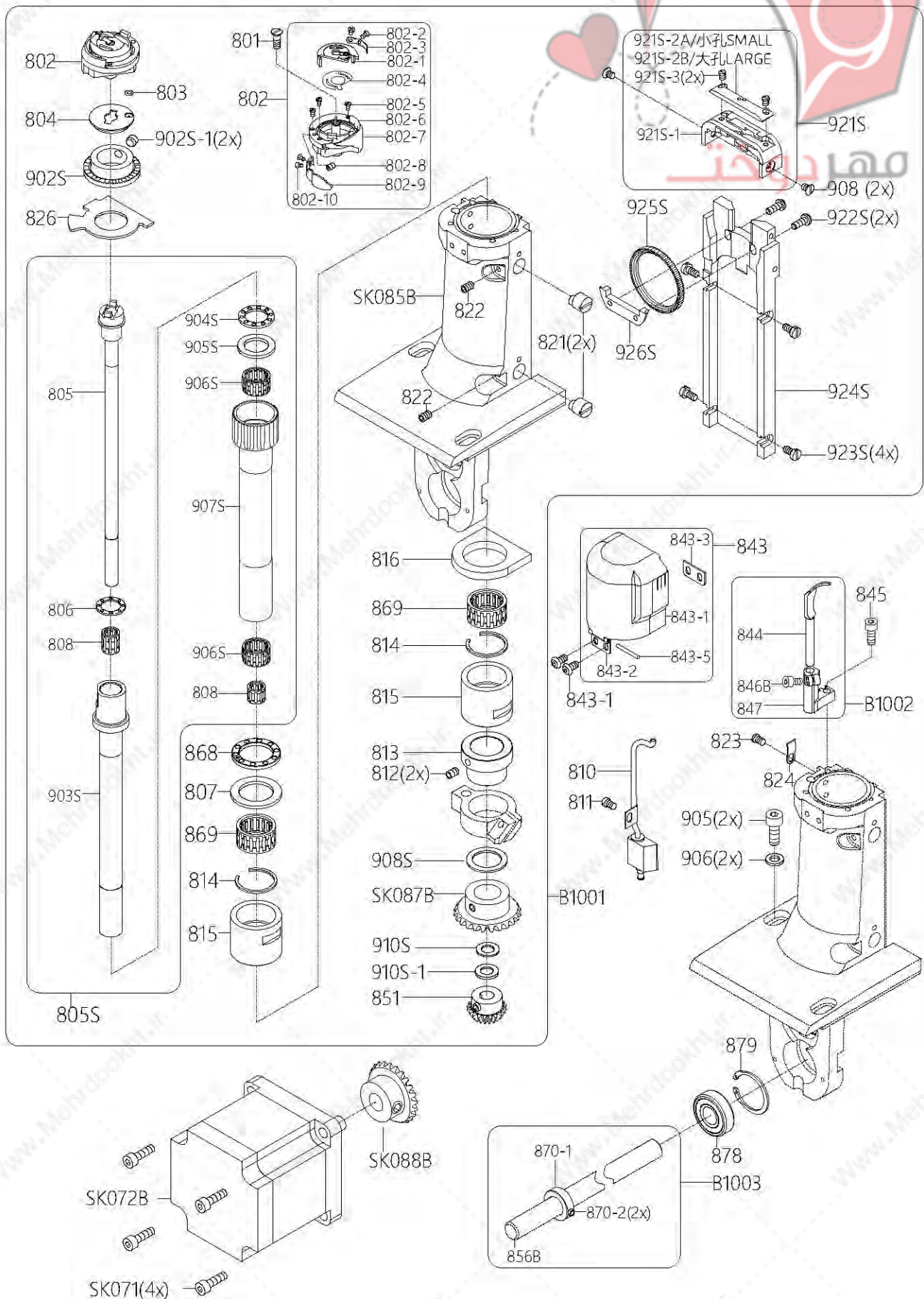
## 9 单针中座机构

### Single needle central bracket mechanism

序号 NO.	件号 Part No.	零部件名称 PartName	零件描述 Description	数量 Amt.		备注
				S7-91-T	S7-92-T	
557	155208005	定环	Fixed ring	1	0	
558	1550NS14001	内六角凹端紧定螺钉M6×0.75×6	Screw pan M6×0.75×6	2	0	
817	H01107	孔用弹性挡圈28	Circlips for hole 28	1	0	
870	B01046	滚珠培林(6001-2RZ/Z2)	Ball bearing(6001-2RZ/Z2)	1	0	
901	15571500100	单针针板(带孔)	Throat plate	1	0	
902	155028002	垫片	Washer	1	0	
903	S05952	内六角圆柱头螺钉M5×12	Screw pan M5×12	1	0	
905	S05963	内六角圆柱头螺钉M6×20(镀锌)	Screw pan M6×20(Nickelpated)	2	0	
906	155028002	垫片	Washer	2	0	
908	1557NS17001	针板座螺钉(进口)	Screw(Imported)	2	0	
909	S05962	内六角圆柱头螺钉M6×12	Screw pan M6×12	3	0	
911	S10076	内六角凹端紧定螺钉M4×6	Screw pan M4×6	1	0	
912	155025006	中座大齿轮	Bevel gear(big)	1	0	
913	S10075	内六角凹端紧定螺钉M4×5	Screw pan M4×5	1	0	
914	155025007	中座小齿轮	Bevel gear(big)	1	0	
SK041B	155833002	上下送料电机	Feeding motor	1	0	
SK071	S05952	内六角圆柱头螺钉M5×12	Screw pan M5×12	4	0	
SK080B	930000469	单针中座	Single needle central bracket(Painting)	1	0	喷漆
SK091	155801003	轴承座	Seat of bearing	1	0	
SK907	155826001	偏心销	Adjustig pin	1	0	
SK908	P01094	圆柱销	Cylindrical pin	1	0	
SK920	15581400200	送金组件	Feeding component	1	0	
B0901	950800238	单针中座部装	Single needle central bracket assembly	/	/	
B0902	950800140	剪线拉杆限位定环部装	Retaining ring assembly	/	/	
B0903	950800242	轴承座部装	Seat of bearing assembly	/	/	

## 10 双针左边座及中座机构

Double needle left side bracket & central bracket mechanism





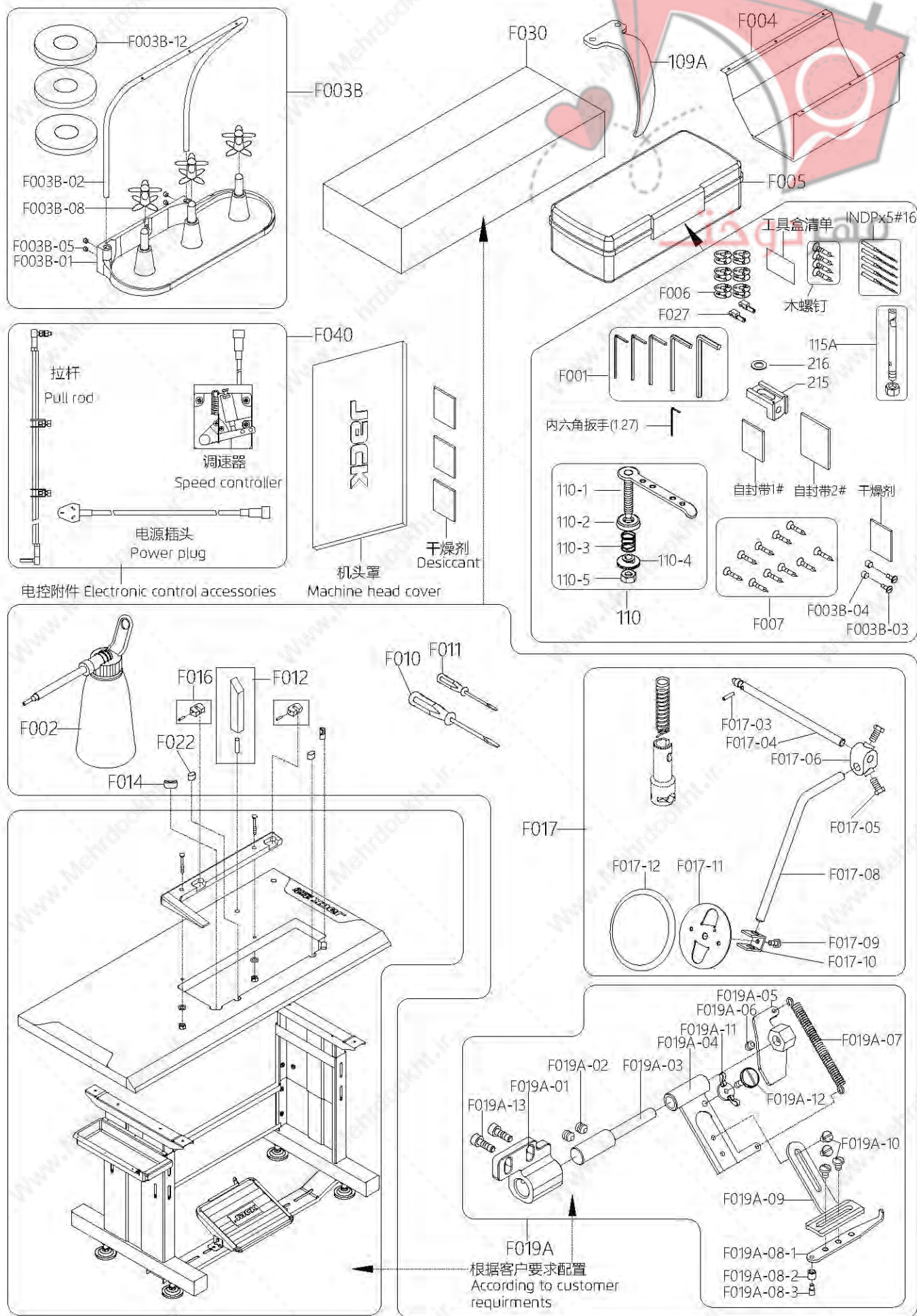
## 10 双针左边座及中座机构

### Double needle left side bracket & central bracket mechanism

序号 NO.	件号 Part No.	零部件名称 PartName	零件描述 Description	数量 Amt.		备注
				S7-91-T	S7-92-T	
801	1550NS11014	一字沉头螺钉	Screw pan	0	1	
802	15521800100	旋梭组件	Hook asm	0	1	
803	O01154	O型圈	O-ring	0	1	
804	155209013	大釜护盖	Cauldron fender	0	1	
805S	15530200100	双针釜轴套管组件	Hook driver(Double needle)	0	1	
807	155228002	轴承垫片	Bearing gasket	0	1	
810	15522100200	油管(组件)	Tubing (asm)	0	1	
811	1550NS11013	一字圆柱头螺钉	Screw	0	1	
812	1550NS14001	内六角凹端紧定螺钉M6×0.75×6	Screw pan M6×0.75×6	0	2	
813	155208002	套管下紧圈	Running casing	0	1	
814	155229001	卡簧	Circlip	0	2	
815	155203009	斧轴套管	Axe shaft casing	0	2	
816	155223001	油棉垫	Oil cotton pad	0	1	
821	155026003	调整销	Adjusting pin	0	2	
822	S10076	内六角凹端紧定螺钉M4×6	Screw pan M4×6	0	2	
823	1552NS11001	开槽圆柱头螺钉	Screw	0	1	
824	155212028	弹簧板	Spring plate	0	1	
826	155222001	橡皮垫	Rubber mat	0	1	
843	15521203100	大釜盖组件	Post cap	0	1	
843-1	S17883	内六角平圆头螺钉M4×8(镀镍)	Screw pan M4×8(Nickelpated)	0	2	
844	155202015	牛角	Rotating hook opener	0	1	
845	S05944	内六角圆柱头螺钉M4×12	Screw pan M4×12	0	1	
846B	S05992	内六角圆柱头螺钉M4×6	Screw pan M4×6	0	1	
847	155209014	牛角固定座	Rotating hook opener bracket	0	1	
851	155025004	小齿轮	Bevel gear(small)	0	1	
868	155224013	平面轴承	Plane bearing	0	1	
869	155224014	滚针轴承	Needle bearing	0	2	
870-1	155208007	定环	Stationary ring	0	1	
870-2	S10075	内六角凹端紧定螺钉M4×5	Screw pan M4×5	0	2	
878	B01062	深沟球轴承(6901-2RZ)	Ball bearing(6901-2RZ)	0	1	
879	H01111	孔用弹性挡圈24	Circlips for hole 24	0	1	
902S	155225009	送料平面齿轮	Feeding plane wheel	0	1	
902S-1	S09174	内六角平端紧定螺钉M6×0.75×4	Screw pan M6×0.75×4	0	2	
905	S05963	内六角圆柱头螺钉M6×20(镀镍)	Screw pan M6×20(Nickelpated)	0	2	
906	155028002	垫片	Washer	0	2	
908	1557NS17001	针板座螺钉(进口)	Screw(Imported)	0	2	
908S	155228007	调整垫片	Adjusting washer	0	1	
910S	155128001	调整垫片	Adjusting washer	0	2	
910S-1	155228008	垫片	Washer	0	1	
921S	15531500200	双针针板组件(1.2-1.8)	Double needle throat plate(1.2-1.8)	0	1	
922S	S05943	内六角圆柱头螺钉M4×10	Screw pan M4×10	0	2	
923S	1553NS11002	开槽圆柱头螺钉	Screw	0	4	
924S	155301001	双针中座	Support plate(Double needle)	0	1	
925S	155225012	送料齿轮	Gear	0	1	
926S	155209021	送料轮固定板	Fixing plate	0	1	
SK071	S05952	内六角圆柱头螺钉M5×12	Screw pan M5×12	0	4	
SK072B	155833002	上下送料电机	Feeding motor	0	1	
SK085B	930000497	双针左边座	Double needle left side bracket(Painting)	0	1	喷漆
SK087B	155825003	齿轮	Gear	0	1	
SK088B	155825004	送料小齿轮	Gear(small)	0	1	
B1001	15580100600	双针左边座及中座部装	Double needle left side bracket and central bracket assembly	/	/	
B1002	950800162	双针牛角固定座组件部装	Double needle rotating hook opener bracket assembly	/	/	



## 11 随机附件 Accessories





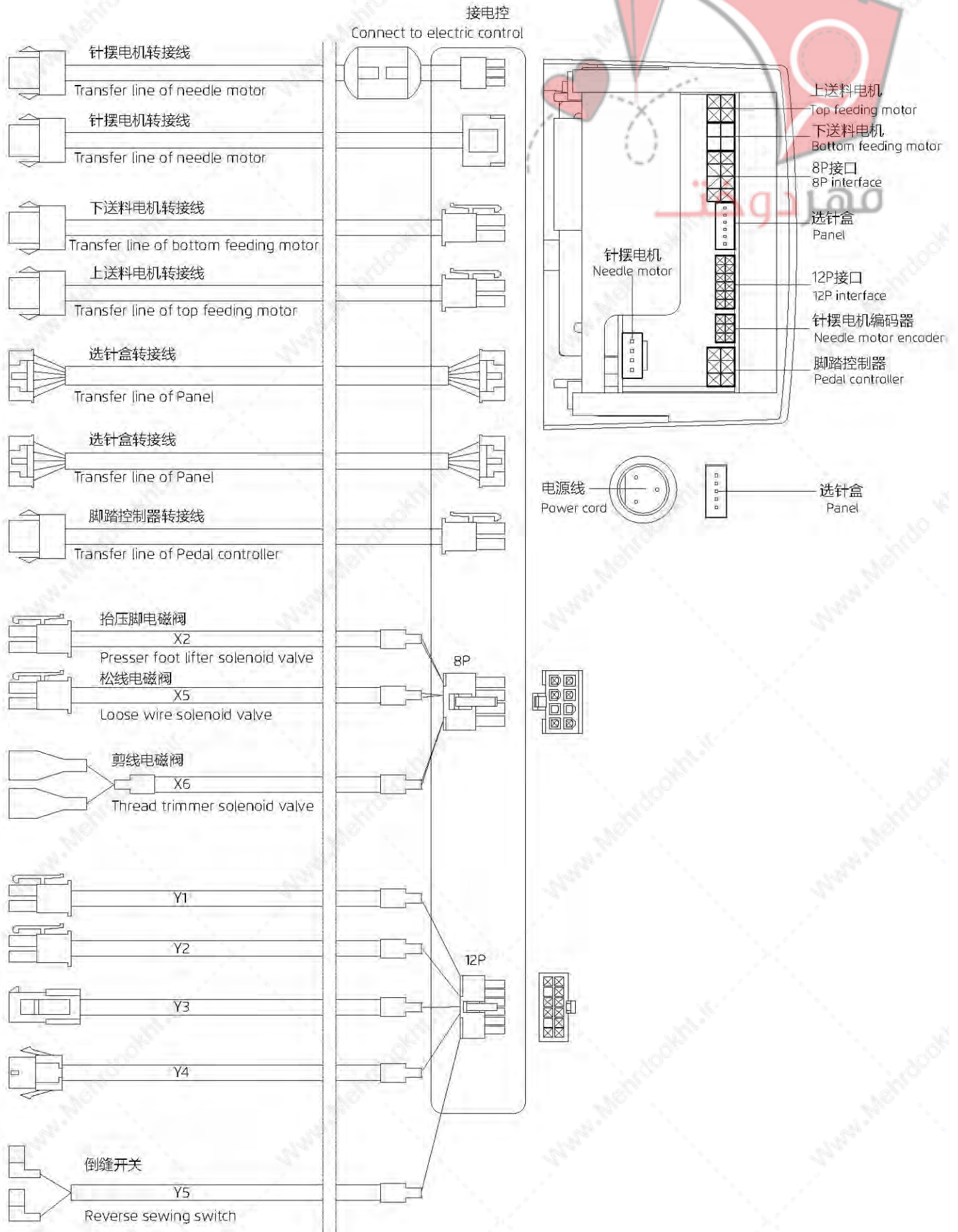
# 11 随机附件

## Accessories

序号 NO.	件号 Part No.	零部件名称 PartName	零件描述 Description	数量 Amt.		备注
				S7-91-T	S7-92-T	
109A	155211002	挑线杆防护罩	Thread takeup lever cover	1	1	
110	155213004	绕线夹线器组件	Bobbin thread tension asm	1	1	
115A	15521300500	穿线杆组件(含螺母)	Spool pin asm	1	1	
215	155009002	顶针座	Thimble seat	1	0	
216	155228010	平垫圈	Flat washer	0	1	
346	155217001	机针(INDP×5#16)	Needle INDP×5#16	5	10	
F001	155031001	内六角扳手(2mm)	Allen key (2mm)	1	1	
	155031002	内六角扳手(2.5mm)	Allen key (2.5mm)	1	1	
	155031003	内六角扳手(3mm)	Allen key (3mm)	1	1	
	155031004	内六角扳手(4mm)	Allen key (4mm)	1	1	
	155031005	内六角扳手(5mm)	Allen key (5mm)	1	1	
	155231090	内六角扳手(1.27mm)	Allen key (1.27mm)	1	1	
F002	155231002	横嘴油壶	Horizontal mouth oil pot	1	1	
F003B-01	155231016	线架盘	Thread stand rack	1	1	
F003B-02	155231028	线架	Thread stand	1	1	
F003B-03	1552NS11004	线架盘螺钉	Screw of thread stand rack	2	2	
F003B-04	155231006	尼龙挡圈	Nylon retaining ring	2	2	
F003B-08	155231017	支撑芯	Stand rod	3	3	
F003B-12	155231027	线盘垫	Spongy cushion	3	3	
F004	155231009	油盘	Oil pan	1	1	
F005	155231010	工具箱	Tool box	1	1	
	155731005	工具箱清单	Tool box list	1	1	
F006	155231011	梭子	Shuttle	6	9	
F007	155226001	圆钢钉8分	Round steel nail	10	10	
	155231035	自封袋1#	Self sealing bag1#	3	3	
	155231043	自封袋2#	Self sealing bag2#	2	2	
F010	155031007	螺钉刀(中)	Screwdriver (middle)	1	1	
F011	155031006	螺钉刀(小)	Screwdriver (small)	1	1	
F012	155232023	枕木组件	Sleeper component	1	1	
F014	155031011	橡胶垫	Rubber mat	2	2	
F016	155231012	后纽扣橡胶垫	Rubber mat of rear button	2	2	
F017	155231013	脚弓组	Ankle arch group	1	1	
F019A	155231014	靠边组件	Edge assembly	1	1	
F022	155231015	橡胶垫	Rubber mat	2	2	
F027	155031013	后纽扣	Rear button	2	2	
F030	155231001	附件纸箱	Accessory box	1	1	
	155531004	附件纸板(L型板)	Accessory carton	1	1	
	155231024	机头罩	Nose covering	1	1	
	155231029	木螺钉	Wood screw	4	4	
	155231020	合格证	Certificate	1	1	
	155531006	S7-ZX纸箱	Roller carton	1	1	
	15553100500	机身泡沫组件	Foam for machine	1	1	
	155531002	产品使用说明书&产品零件图册	Manual book & parts book	1	1	
F040	155531001	电控附件	Electric control accessories	1	1	
	155231033	PE袋	PE Bag	1	1	
	155231039	硅胶干燥剂	Silica gel desiccant	10	10	
	155731006	装箱清单	Packing list	1	1	
	155231040	条形码标签	Bar code	2	2	
	155231041	挂牌绳卡	Tag needle	1	1	

## 12 电器连接图

### Electrical connection diagram









杰克缝纫机  
全球销量遥遥领先  
Leading in global sales

400-8876-858  
[www.chinajack.com](http://www.chinajack.com)



JACK SEWING MACHINE CO.,LTD.

2020年12月份 Edition:Dec.,2020

杰克缝纫机股份有限公司

浙江省台州市椒江区三甲东海大道东段1008号  
电话: 0086-576-88177788 8817789  
传真: 0086-576-88177758  
产品标准代号: Q/TK007-2017  
资料如有更改, 恕不另行通知, 以实样为准

JACK SEWING MACHINE CO.,LTD.

NO.1008,Donghai Avenue East,Jiaojiang District,Taizhou City,Zhejiang  
TEL:0086-576-88177782 88177767 E-mail:sales@chinajack.com  
FAX:0086-576-88177787 [www.chinajack.com](http://www.chinajack.com)  
Standard code of the products:Q/TK 007-2017  
You will be not informed if the file has been revised.Please set sample as standard.

From the library of Superior Sewing Machine & Supply LLC - [www.supsew.com](http://www.supsew.com)